

2008 HYUNDAI SANTA FE

امداد خودرو فارما

تلفن شبانه روزی: ۰۲۱-۸۸۸۶۲۰۸۵

Farma8.com

Explore it.



THE TRUTH IS, finding a car that's right for you isn't that easy. You've got cars that over promise and under deliver. Cars that assume you've won the lottery and desperately want to part with the proceeds. And value-priced cars that, unfortunately, drive that way.

Fortunately, there is one company that understands and embraces the concept of what people really want in a car. That company is Hyundai.

We make smart cars for smart people. Cars that routinely get 5-star crash test ratings. Cars where the number of safety features takes precedence over the number of cupholders. And cars that put quality exactly where it belongs – first and foremost.



We also believe in a warranty that lasts twice as long as the average car loan. Not to mention the average car warranty.

We steadfastly adhere to the proposition that premium amenities are not to be reserved exclusively for the wealthy. That beautiful design

shouldn't necessitate a second mortgage. And that stimulating performance and handling needn't come from engineers with names like Hans and Giuseppe.

In other words, we believe in cars that don't insult your intelligence, but rather, respect it.

Like the versatile Santa Fe. With advanced standard safety features, available seating for seven and V6 power, Santa Fe is the crossover that delivers the perfect blend of fun-to-drive and no-nonsense practicality.

Now that we've whetted your appetite, feel free to turn the page and get better acquainted.

LIMITED IN SLATE BLUE

Head of Its Class

VOTED MOST LIKELY TO EXCEED.

YOUR EXPECTATIONS, THAT IS. Seriously, where do we start? With safety features that led the Insurance Institute for Highway Safety to give it a "Top Safety Pick" designation? Or the car-like handling and performance that make it a joy to drive. Maybe it's the available seating for seven. All of which means you'll graduate to a new level of satisfaction behind the wheel of the Santa Fe.

تلفن شبانه روزی: ۰۲۰۸۰۰۰۰۰۰۰۰

Responsive Performance

WHY SHOULDN'T A VEHICLE THAT SEATS SEVEN DRIVE LIKE A VEHICLE THAT SEATS TWO?

WHEN PEOPLE TOLD US that the problem with today's utility vehicles is that they feel too, well, utilitarian, our engineers said, "We should make one that drives like a car." So they did, by offering a pair of potent V6s. Giving it a 5-speed automatic with SHIFTRONIC® manual shifting. Including 4-wheel disc brakes with ABS for sure stopping power. And engineering a fully independent suspension featuring MacPherson struts up front and a multi-link rear set-up with front and rear stabilizer bars for agile handling, responsive steering and impressive body control.

امداد خودرو فارما

تلفن شبانه روزی: ۰۲۱-۸۸۸۶۲۰۰

farmasos.com



ALL WHEEL DRIVE

What does the Santa Fe have in common with a Porsche 911? A BorgWarner ITM 3e™ torque management system that automatically distributes torque to each wheel as needed.



V6 POWER

Get the show on the road in a hurry with a 3.3L V6 engine, which delivers 242 hp and 226 lb.-ft. of torque for spirited acceleration and confident passing, all while achieving a ULEV emissions rating.



TRAILER PREP PACKAGE

This package beefs up the engine and drivetrain with a larger radiator core, more powerful fans and a transmission fluid cooler for worry-free towing performance under heavier loads.

Form Follows Function

ALWAYS REMEMBER, IT'S WHAT'S ON THE OUTSIDE THAT COUNTS.

WE'RE SORRY FOR UPENDING THE WISDOM passed on to you over the years. But the fact is, Santa Fe's handsome design promises an amazing automotive experience, and surprise—that's exactly what you get. From the 18-inch, 6-spoke alloy wheels, to the rear privacy glass, to the roof side rails and integrated fog lights, it delivers plenty of premium features that set it apart from the pack. Meanwhile, each body is prepped with an 18-pass, rotary-dip primer process before painting to improve corrosion protection and ensure that Santa Fe's beauty is made to last.

امداد خودرو فارما

تلفن شبانه روزی: ۰۲۱ ۸۸۸۶۱۰۸۸

FarmaSOS.com





DVD ENTERTAINMENT SYSTEM

This DVD entertainment system features a flip-down, 8-inch screen, remote control and two wireless headphones. It'll give the local cineplex a run for its money.



XM SATELLITE RADIO

XM® Radio gives you access to more than 170 channels of digitally broadcast entertainment including music, news, sports and more.¹ And you can enjoy them coast to coast.



NAVIGATION

The navigation system's bright 6.5-inch full-color touchscreen lets you clearly see your route, while convenient turn-by-turn voice prompts guide you to your destination.



IN-DASH 6-DISC CD CHANGER

No more fumbling for your CDs while on the road. Keep hours of your favorite music at your fingertips with this convenient in-dash 6-disc changer with MP3 compatibility.



AUTOMATIC TEMPERATURE CONTROL

You can control the weather – in your Santa Fe, at least. Set the thermostat and the system adjusts the heating, cooling and fan speed to keep the cabin at the exact temperature you prefer.



HEATED POWER SIDE MIRRORS

Adjust your dual power side mirrors with the greatest of ease from the comfort of the Santa Fe's cabin. They're even heated to keep your view clear in cold weather.



BLUETOOTH WIRELESS TECHNOLOGY

Safely make calls while driving via the Bluetooth® hands-free phone system. Located in the upper console, it features a built-in microphone and speaker for perfect clarity.²



HOMELINK

Located conveniently on the electrochromic rearview mirror, the HomeLink® integrated transceiver lets you control multiple home functions right from the driver seat.



DUAL EXHAUST

Wondering where the melodious engine note of the V6 comes from? We have the answer. The dual exhaust tips improve airflow for increased power, while giving the exterior a sporty accent.



COMFORT

The premium driver seat offers 8-way adjustability to find the perfect driving position. Plus, you and your front passenger can enjoy the heat function on chilly morning drives.



SMALL STORAGE

"A place for everything and everything in its place." Whoever said that had to be thinking of the Santa Fe, where there are plenty of convenient storage spaces throughout.



REMOTE KEYLESS ENTRY

Loading yourself as well as your cargo is a no-brainer thanks to this handy remote, which controls the door locks as well as the rear hatch. It also activates the vehicle's alarm system.

FarmaSOS.com

LET STRESS TAKE THE BUS, because it certainly has no place in the Santa Fe's comfortable and well-appointed interior. Tasteful woodgrain trim with chrome accents imparts a luxurious appeal to the cabin, while the thoughtful design and intuitive ergonomics put every control precisely where you expect it to be. Stylish gauges are backlit in a cool blue light, and the leather-trimmed interior in the Limited adds even more elegance and flair.



Spacious Versatility



امداد خودرو فارما
HYUNDAI HIDEAWAY™ SEATS

It's hard to figure what the Santa Fe likes more, people or cargo. After all, it offers seating for seven with its third-row seats. And when they're not being used, the Hyundai Hideaway seats fold flush into the floor for outstanding cargo capacity. Which goes to show you can never have too many friends. Or too much stuff.

تلفن شبانه روزی: ۰۲۱-۸۸۶۲۰۸۵

FarmaSOS.com



115-VOLT OUTLET

Need to plug something in? A computer. An electric razor. You must lead a pretty busy life. The Santa Fe can accommodate you with this power outlet, which doesn't require an adapter.



POWER SUNROOF

Bring the sun, the moon and fresh air into the cabin with just the touch of a button, and watch your mood improve with each passing mile. It also features a tilt function for improved ventilation.



ONE-TOUCH ADJUSTABLE ROOF RACK

These cross rails are so simple to adjust, only one finger is required. So now getting large-sized boxes and other cargo to fit snugly on the roof is as easy as 1...well, just 1.

PREVENTING AN ACCIDENT IS THE BEST WAY TO SURVIVE ONE.

IT'S COMMON SENSE REALLY, but a fact that goes beneath the notice of many car companies. Not Hyundai. That's why we fill our cars with cutting-edge active safety features—standard—that work dynamically with input from you and the road to help prevent an accident in the event of an emergency. Which is why a Hyundai is the ideal vehicle to protect you, your passengers and your peace of mind.



ELECTRONIC STABILITY CONTROL

An advanced, electronically-controlled system reads data from sensors throughout the vehicle. Input is relayed to a sophisticated computer, and is processed using proven algorithms, which enables ESC to react instantaneously to input from you and the road.¹



TRACTION CONTROL SYSTEM

Wet pavement may have met its match. The advanced Traction Control System senses unexpected wheelspin while accelerating and automatically applies the appropriate combination of brakes and throttle to route power to the tire with the most traction.²



ANTI-LOCK BRAKING SYSTEM

ABS prevents wheel lock-up and helps maintain steering control, even during emergency braking situations, by rapidly pulsing the brakes. So you can control steering to successfully maneuver around objects ahead of you.



ELECTRONIC BRAKE-FORCE DISTRIBUTION

You never know where you'll be when you need to stop quickly—from a dirt road to a major thoroughfare. EBD uses a network of sensors to provide the appropriate braking pressure at each wheel for maximum braking performance.



BRAKE ASSIST

Statistics show that drivers frequently don't brake forcefully enough in an emergency situation. Brake Assist actually senses when you are in a panic stop and immediately applies the maximum braking pressure to help you stop in a shorter distance.

¹Electronic Stability Control (ESC) cannot control your vehicle's stability under all driving situations. ESC is not a substitute for safe driving practices. No system, no matter how advanced, can overcome physics or correct poor driving. The driver is always responsible for controlling the vehicle and must use caution to avoid loss of control in all driving conditions. Speed, road conditions and driver steering input will affect whether ESC can help prevent loss of control. See Owner's Manual for details. ²The Traction Control System (TCS) is meant to enhance conscientious driving habits and is not a substitute for safe driving practices.



NHTSA 5-STAR CRASH RATING

Santa Fe has received the U.S. government's highest crash rating of 5 stars for both front- and side-impact collisions.¹

SOME THINGS IN LIFE ARE UNAVOIDABLE. That's why we consider our passive safety systems among the most important parts of the vehicles we build. Because you should be able to count on your vehicle to protect you in the event of an accident. These systems include advanced airbags, active front head restraints, a reinforced body structure, shingle-style rear head restraints for improved visibility, and lots of other state-of-the-art technologies. It's important to note that Santa Fe's long list of safety features comes standard. As far as we're concerned, protecting your well-being should never be optional.



STRUCTURAL INTEGRITY

You wouldn't build a house on a shaky foundation. Same goes for cars. We built the Santa Fe with a reinforced unibody construction of high-tensile steel to effectively absorb collision energy.



TIRE PRESSURE MONITORING SYSTEM

Each wheel is equipped with an air-pressure sensor located at the valve stem. In the event that any tire reaches a specified low air pressure, a warning light will alert you as to which tire is low.²

امداد خودرو فارما



SIX AIRBAGS

We gave the Santa Fe six airbags: Dual front airbags with an Occupant Classification System, front seat-mounted side-impact, and roof-mounted side-curtain airbags for front and rear passengers, all standard.³



SEATBELT PRETENSIONERS

Pretensioners tighten safety belts in certain accidents to reduce front occupants' forward movement. Then, force limiters release slack to limit load across the body and help minimize injury.



ACTIVE FRONT HEAD RESTRAINTS

Whiplash is one of the most common injuries in a rear collision. With this feature, the head restraint moves forward and up, which reduces the likelihood of neck injury.

¹Government star ratings are part of the National Highway Traffic Safety Administration's (NHTSA's) New Car Assessment Program (www.safercar.gov). 2007 model tested with standard side-impact airbags (SABs). ²TPMS is not a substitute for proper maintenance. See Owner's Manual for details. ³The Supplemental Restraint System (SRS) is designed to work with the 3-point seatbelt system. The SRS deploys in certain frontal and/or side-impact conditions where significant injury is likely. The SRS is not a substitute for seatbelts, which should be worn at all times. Children under the age of 13 should be restrained securely in the rear seat. NEVER place a rear-facing child seat in the front seat of a vehicle that has a passenger-side airbag.

IT'S DIFFICULT TO PREDICT THE FUTURE. UNLESS YOU HAPPEN TO BE DESIGNING IT.

IT TAKES A WORLD OF PEOPLE TO MAKE A HYUNDAI. From our R&D Center in South Korea, where we conduct predesign studies, prototyping, full-scale aerodynamics analysis, crash testing and test driving. To Alabama and our \$1.1 billion state-of-the-art manufacturing plant. To Michigan and our engineering center. To our Southern California design facility, where we utilize the world's most advanced visualization, graphics and clay-modeling technologies. To our environmental technology research center in Seoul. Together, these facilities ensure that every vehicle we build is at the forefront of automotive technology.

امداد خودرو فارما

تلفن شماره روزی: ۰۲۱-۸۸۱۶۲۰۸۵

FarmaSOS.com



WE'RE VERY HANDS ON

We hand check nuts, bolts, cables, wiring and power components before any Hyundai leaves the plant. Then every vehicle is road tested to eliminate squeaks and rattles that can't be detected on the factory floor.



PERFECTION IS OUR OBSESSION

For example, this door hinge used to look a little different. But our engineers noticed that the old design was adding a minute amount of wind noise to the vehicle. So they redesigned it. Now it adds none at all.



YOU CAN NEVER BE TOO SAFE

Our vehicles' excellent safety ratings are the result of thousands of hours of simulations in state-of-the-art safety testing facilities. Is destroying millions of dollars worth of automobiles worth it? Absolutely.



PROVEN BEFORE IT'S DRIVEN

At our California Proving Grounds, every new design is tested in real-world situations. This includes a 6.4-mile track to evaluate engine and road noise, and a 3.3-mile road course that simulates America's highways.



MEET OUR QUALITY INSPECTOR

An army of 250 robots, equipped with optical sensors far more sensitive than the human eye, inspects every vehicle for quality welds and proper fit. This ensures tight seams and seals, as well as perfect alignment.



WE TREAT OUR BODIES LIKE TEMPLES

Prior to painting, the body of each Hyundai is electrically charged, then immersed in a primer bath with an opposite charge. This ensures even hidden surfaces are completely coated for incredible corrosion resistance.



THE MYSTERIOUS 2.3 MILES

Every new Hyundai that comes out of our Alabama plant has 2.3 miles on the odometer. That's because each one is road tested on our test track to ensure every vehicle is working perfectly.



TESTED TO THE EXTREMES

From the scorching heat of Death Valley, Calif., to the frozen tundra of central Canada, our cars are tested in the most extreme conditions. This ensures their performance never wavers, no matter what life throws your way.

تلفن شبانه روزی: ۰۲۱-۸۸۶۲۰۸۵

10-YEAR/100,000-MILE
POWERTRAIN PROTECTION

5-YEAR/60,000-MILE
NEW VEHICLE LIMITED WARRANTY

7-YEAR/UNLIMITED MILES
ANTI-PERFORATION WARRANTY

5-YEAR/UNLIMITED MILES
24-HOUR ROADSIDE ASSISTANCE

America's Best Warranty

**A FIVE-YEAR WARRANTY SAYS A LOT ABOUT THE CAR.
A TEN-YEAR WARRANTY SAYS A LOT ABOUT THE CAR COMPANY.**

IT SAYS THAT WE STAND BEHIND OUR VEHICLES with a warranty matched by no other automaker in the country.¹ It says your new Hyundai's powertrain may be covered until the year 2018. (Just think about that for a minute.) But above all, it says that we build a vehicle that you can rely on. That as a company, we're committed to your satisfaction, long after you leave the dealership and your car is bought and paid for. And that's as refreshing now as it will be in a decade.

تلفن شبانه روزی: ۰۲۱-۸۸۶۲۰۸۵

ArmaSOS.com



SANTA FE



AZERA SONATA ELANTRA ACCENT TIBURON TUCSON VERACRUZ ENTOURAGE



SANTA FE GLS

STANDARD FEATURES INCLUDE:

- 2.7-liter, 24-valve, DOHC V6 engine with Continuously Variable Valve Timing and dual exhaust outlets
- 5-speed manual transmission
- Electronic Stability Control
- Traction Control System
- Anti-lock Braking System
- Electronic Brake-force Distribution
- Brake Assist
- Advanced dual front airbags with Occupant Classification System
- Front side-impact airbags
- Front and rear side-curtain airbags
- Active front head restraints
- Tire Pressure Monitoring System
- 16-inch, 5-spoke alloy wheels with P235/70R tires
- Dual power side mirrors
- Air conditioning with cabin air filter
- Power windows with driver's auto-down
- Power door and tailgate locks
- Deluxe seat cloth
- 112-watt AM/FM/CD/MP3 six-speaker audio system
- XM® Satellite Radio¹
- Tilt-and-telescopic steering wheel
- Remote keyless entry system
- Steering-wheel-mounted cruise control
- Rear window wiper/washer
- Roof side rails



SANTA FE SE

INCLUDES ALL STANDARD GLS FEATURES PLUS:

- 3.3-liter, 24-valve, DOHC V6 engine with Continuously Variable Valve Timing
- 5-speed automatic transmission with SHIFTRONIC®
- 18-inch, 6-spoke alloy wheels with P235/60R tires
- Automatic headlights
- Front fog lights
- Dual heated power side mirrors
- Windshield wiper de-icer
- Electrochromic auto-dimming rearview mirror with compass
- Leather-wrapped steering wheel and shift knob
- Steering-wheel-mounted audio controls
- Multi-function trip computer
- Chrome front grille surround
- Door courtesy light
- Premium seat cloth
- Driver seat lumbar support



SANTA FE LIMITED

INCLUDES ALL STANDARD SE FEATURES PLUS:

- Power tilt-and-slide sunroof
- Leather seating surfaces²
- Heated front seats with variable temperature selection
- 605-watt Infinity® Logic 7® Surround Sound audio system with in-dash 6-disc CD/MP3 changer, external amplifier and subwoofer
- 8-way power driver seat with power lumbar support
- Dual zone automatic temperature control with outside temperature display
- HomeLink® integrated transceiver
- Chrome-accented front grille, door and tailgate handles
- Deluxe metal scuff plate
- Bodycolor rear spoiler
- "Limited" badging

امداد خودرو فارس

تلفن شبانه روزی: ۰۲۱-۸۸۶۲۰۸۵

FarmaSOS.com

EXTERIOR COLOR CHOICES



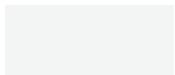
BRIGHT SILVER

GRAY OR BLACK INTERIOR



SILVER BLUE*

BEIGE, GRAY OR BLACK INTERIOR



POWDER WHITE PEARL

BEIGE, GRAY OR BLACK INTERIOR



PLATINUM SAGE

BEIGE, GRAY OR BLACK INTERIOR



NATURAL KHAKI

BEIGE OR BLACK INTERIOR



DARK CHERRY RED

BEIGE OR BLACK INTERIOR



STEEL GRAY*

GRAY OR BLACK INTERIOR



SLATE BLUE

BEIGE, GRAY OR BLACK INTERIOR



DEEPWATER BLUE

BEIGE, GRAY OR BLACK INTERIOR



EBONY BLACK

BEIGE, GRAY OR BLACK INTERIOR

INTERIOR COLOR CHOICES



GLS BEIGE CLOTH



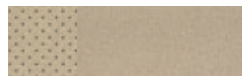
GLS GRAY CLOTH



SE PREMIUM BEIGE CLOTH



SE PREMIUM GRAY CLOTH



LIMITED BEIGE LEATHER



LIMITED BLACK LEATHER

- S = STANDARD
- O = OPTIONAL FEATURE
- = NOT AVAILABLE
- PE = POPULAR EQUIPMENT PACKAGE
- P = PREMIUM PACKAGE
- T = TOURING PACKAGE
- N = NAVIGATION PACKAGE
- RSE = REAR SEAT ENTERTAINMENT PACKAGE
- TN = TOURING PACKAGE + NAVIGATION
- TR = TOURING PACKAGE + RSE

OPTION PACKAGES

GLS PACKAGES:³

Popular Equipment Package: Premium seat cloth, heated side mirrors, steering-wheel-mounted audio controls, automatic headlights, driver seat lumbar support, multi-function trip computer

Premium Package: Popular Equipment Package, power tilt-and-slide sunroof, heated front seats, leather-wrapped steering wheel and shift knob

SE PACKAGES:

Premium Package: Power tilt-and-slide sunroof, heated front seats, power driver seat with power lumbar support, HomeLink[®] integrated transceiver

Touring Package: Hyundai Hideaway™ 3rd-row seats, 3rd-row auxiliary climate control, Trailer Prep Package

Touring + Premium Package: Touring Package, Premium Package

LIMITED PACKAGES:

Navigation Package: LG[®] In-dash DVD Navigation System⁴

Rear Seat Entertainment Package: Rear DVD entertainment system, 115-volt power outlet

Touring Package with Navigation: Navigation Package, Hyundai Hideaway 3rd-row seats, 3rd-row auxiliary climate control, Trailer Prep Package, 115-volt power outlet

Touring Package with RSE: Rear Seat Entertainment Package, Hyundai Hideaway 3rd-row seats, Trailer Prep Package

SAFETY FEATURES

	GLS	SE	LIMITED
Electronic Stability Control (ESC)	S	S	S
Traction Control System (TCS)	S	S	S
4-wheel Anti-lock Braking System (ABS), Electronic Brake-force Distribution (EBD), Brake Assist	S	S	S
Advanced Dual Front Airbags (SRS) with Occupant Classification System (OCS)	S	S	S
Front Side-impact Airbags (SRS), seat-mounted	S	S	S
Side-curtain Airbags (SRS), roof-mounted; all rows	S	S	S
3-point Seatbelts, all seating positions	S	S	S
Front Seatbelt Pretensioners with Force Limiters	S	S	S
Tire Pressure Monitoring System (TPMS)	S	S	S
Active Front Head Restraints	S	S	S
Rear LATCH Child-seat-attachment System	S	S	S
Energy-absorbing Steering Column	S	S	S

EXTERIOR FEATURES

	GLS	SE	LIMITED
Power Tilt-and-slide Sunroof with Sliding Sunshade	P	P	S
Dual Heated Power Side Mirrors, manual-folding	PE	S	S
Automatic Headlights	PE	S	S
Front Fog Lights	-	S	S
Remote Keyless Entry System with Tailgate Unlock, Alarm and Panic Alert	S	S	S
Windshield Wiper De-icer	-	S	S
Intermittent Rear Window Wiper Washer	S	S	S
Chrome-accented Grille, Door and Tailgate Handles; Bodycolor Rear Spoiler	-	-	S
Roof Side Rails/One-touch Adjustable Cross Rails	S/O	S/O	S/O

INTERIOR FEATURES

	GLS	SE	LIMITED
Air Conditioning with Front Seat and 2nd-row Vents	S	S	S
Dual Zone Automatic Temperature Control with Outside Temperature Display	-	-	S
3rd-row Air Conditioning Vents and Fan Control	-	T	TN/TR
Leather Seating Surfaces ²	-	-	S
Leather-wrapped Steering Wheel and Shift Knob	P	S	S
Tilt-and-telescopic Steering Wheel	S	S	S
2nd-row 60/40 Split Fold-down Seats	S	S	S
Hyundai Hideaway 3rd-row 50/50 Split Seats, fold-into-floor	-	T	TN/TR
8-way Power Driver Seat with Power Lumbar Support	-	P	S
Heated Front Seats	P	P	S
112-watt AM/FM/CD/MP3 Audio System with 6 Speakers	S	S	-
605-watt Infinity Logic 7 Surround Sound, In-dash 6-disc CD/MP3 Changer, 11-channel External Amp, 10 Speakers	-	-	S
XM Satellite Radio ¹	S	S	S
Steering-wheel-mounted Audio Controls	PE	S	S
Rear DVD Entertainment System; 8-inch roof-mounted screen, 2 wireless headphones, remote control	-	-	RSE
LG In-dash DVD Navigation System ⁴	-	-	N
Bluetooth [®] Hands-free Phone System ⁵	O	O	O
Power Windows with Driver's Auto-down; Power Door and Tailgate Locks	S	S	S
Electrochromic Auto-dimming Rearview Mirror with Compass	-	S	S
HomeLink Integrated Transceiver	-	P	S
Steering-wheel-mounted Cruise Control	S	S	S
Multi-function Trip Computer (miles per gallon, range to empty, trip distance, temperature ⁶)	PE	S	S
Overhead Console with Maplights and Sunglass Holder	S	S	S
Rear Cargo Net	O	O	O
Four 12-volt Accessory Outlets	S	S	S
115-volt Power Outlet	-	-	RSE/TN

¹XM[®] Satellite Radio requires XM subscription sold separately after first three trial months. All fees and programming subject to change. Traffic and weather channels only available in 21 metropolitan markets. XM service only available in the 48 contiguous United States. See your dealer for details. The XM name is a registered trademark of XM Satellite Radio Inc. All other trademarks are property of their respective owners. ²Does not apply to Hyundai Hideaway 3rd-row seats. ³Requires automatic transmission option. ⁴DVD Navigation System replaces CD changer head unit with single feed. Later availability. ⁵Later availability. Replaces sunglass holder. ⁶On GLS and SE only. ⁷EPA estimates for comparison. Your actual mileage will vary with options, driving conditions, driving habits and vehicle's condition.

WHEELS



16-INCH GLS ALLOY WHEEL



18-INCH SE/LIMITED ALLOY WHEEL

ENGINE	GLS	LIMITED	LIMITED
2.7-liter, 24-valve, DOHC, All-aluminum V6 with Continuously Variable Valve Timing (CVT)	S	-	-
3.3-liter, 24-valve, DOHC, All-aluminum V6 with Continuously Variable Valve Timing (CVT)	-	S	S
Horsepower @ rpm	185 @ 6000	242 @ 6000	242 @ 6000
Torque (lb.-ft. @ rpm)	183 @ 4000	226 @ 4500	226 @ 4500
Compression Ratio	10.4:1	10.4:1	10.4:1
Multi-port Programmed Fuel Injection	S	S	S
Electronic/Distributorless Ignition System	S	S	S

DRIVETRAIN/TRANSMISSION	GLS	LIMITED	LIMITED
Drive Configuration: Front-wheel Drive	S	S	S
All Wheel Drive (AWD) with Driver-selectable Lock	0	0	0
5-speed Manual Transmission	S	-	-
4-speed Electronically Controlled Automatic Transmission with SHIFTRONIC	0	-	-
5-speed Electronically Controlled Automatic Transmission with SHIFTRONIC	-	S	S
Trailer Prep Package (transmission cooler, upgraded radiator and fans, trailer pre-wiring)	-	T	TN/TR

BODY/SUSPENSION/CHASSIS	GLS	LIMITED	LIMITED
Body Type: Crossover Utility Vehicle, 5-passenger / 7-passenger	S/-	S/0	S/0
Unibody Construction	S	S	S
Independent Front Strut and Rear Multi-link Suspension	S	S	S
Front and Rear Stabilizer Bars	S	S	S
Power Rack-and-pinion Steering	S	S	S
Turning Diameter (ft.), curb-to-curb	35.8	35.8	35.8
4-Wheel Disc Brakes, front ventilated	S	S	S
16-inch, 5-spoke Alloy Wheels with P235/70R Tires	S	-	-
18-inch, 6-spoke Alloy Wheels with P235/60R Tires	-	S	S

EXTERIOR DIMENSIONS	GLS	LIMITED	LIMITED
Wheelbase (in.)	106.3	106.3	106.3
Length (in.)	184.1	184.1	184.1
Width (in.), excludes mirrors	74.4	74.4	74.4
Height (in.), includes roof rack	67.9	67.9	67.9
Track (in.), front/rear	63.6/63.8	63.6/63.8	63.6/63.8
Curb Weight (lbs.), FWD/AWD: 5-passenger	3727/3903 (MT), 3793/3969 (AT)	3846/4022	3846/4022
Curb Weight (lbs.), FWD/AWD: 7-passenger	-	3945/4121	3945/4121
Towing Capacity (lbs.), with trailer brakes and Trailer Prep Package/with trailer brakes/without trailer brakes	-/2000/1650	3500/2000/1650	3500/2000/1650
Minimum Ground Clearance (in.)	8.1	8.1	8.1

INTERIOR DIMENSIONS	GLS	LIMITED	LIMITED
Head Room (in.), front/2nd-row/3rd-row	40.2/39.6/-	40.2/39.6/34.8	40.2/39.6/34.8
Leg Room (in.), front/2nd-row/3rd-row	42.6/36.8/-	42.6/36.8/31.3	42.6/36.8/31.3
Shoulder Room (in.), front/2nd-row/3rd-row	59.5/58.6/-	59.5/58.6/53.9	59.5/58.6/53.9
Hip Room (in.), front/2nd-row/3rd-row	55.8/55.0/-	55.8/55.0/44.6	55.8/55.0/44.6
Cargo Volume (cu. ft.), 3rd-row seats down; 2nd-row seats down	78.2	78.2	78.2
Cargo Volume (cu. ft.), 3rd-row seats down; 2nd-row seats up	34.2	34.2	34.2
Cargo Volume (cu. ft.), behind 3rd-row seats	-	10.0	10.0
Passenger Volume (cu. ft.), 5-/7-passenger	108.3/-	108.3/142.3	108.3/142.3

EPA MILEAGE ESTIMATES*/FUEL CAPACITY	GLS	LIMITED	LIMITED
2.7-liter (city/highway), FWD MT ; AT AWD MT ; AT	17/24; 18/24 17/23; 17/23	-	-
3.3-liter (city/highway), FWD and AWD	-	17/24	17/24
Fuel-tank Capacity (gal.)	19.8	19.8	19.8

While the information contained in this brochure was correct at time of printing, specifications and equipment can change. Feature comparisons based on competitor models available at time of printing. No warranty or guarantee is being extended in this brochure, and Hyundai reserves the right to change product specifications and equipment at any time without incurring obligations. Some vehicles are shown with optional equipment. Specifications apply to U.S. vehicles only. Please contact your Hyundai dealer for current vehicle specifications.