

# 2011 GENESIS



# *A Revelation At Every Turn.*

If you're reading this brochure, chances are you're the kind of automotive enthusiast who, instead of simply opening your wallet and adding a status trophy to your garage, prefers to open something else: Your mind. It's a refreshing attitude that often leads you to discover truly rewarding experiences, from new and unexpected sources.

Like Genesis, from Hyundai.

Nobody was looking for Hyundai to build a luxury car that would challenge the automotive elite. But we did. Nobody expected us to benchmark the industry's best, then apply the art and science needed to meet those marks. But we did. Nobody thought we'd charm the pants off a jury of North America's most esteemed automotive journalists. But, once again, we did.

And by doing what few people expected of us, we now find ourselves as a car company that a lot of people are starting to think about in a whole new way.





GENESIS 4.6 IN TITANIUM GRAY METALLIC

You don't half-heartedly enter the luxury performance sedan arena. Not if you expect to earn the respect of drivers whose passions are stoked by the mere mention of such criteria as power-to-weight ratios, torque curves and skid pad results.

Your all-aluminum V8 had better churn out 385 horsepower. Ours does. Your zero-to-sixty sprint had better be well under six seconds. Ours takes 5.3 seconds.<sup>1</sup> Your skid pad results need to surpass 0.80 lateral g's. Ours pulls 0.87. Your passenger cabin had better be roomy. Ours bests every competitor in its segment in front head room and leg room. And your technology can't be a step behind. Ours includes the use of fiber optics, adaptive front lighting, 5-link front and rear suspension with Amplitude Selective Damping, and audio engineering by Lexicon.<sup>®</sup>

So compare Genesis on the objective measures that get you a seat at the luxury sedan table. And if you find, as *Road & Track* did, that Genesis "puts power down like a BMW and rides like a Lexus," then by all means, move on to more subjective criteria. Like the aroma of a leather-trimmed interior. The sensations of a driver's seat that can cool or warm. And the sound of an engine as it reaches the sweet spot of its torque curve.

*Road & Track*, May 2009

"The Genesis puts power down like a BMW and rides like a Lexus."

<sup>1</sup> *Car and Driver*, July 2009.







# *Designed To Move You.*

---

With a drag coefficient of just 0.27, Genesis achieves a remarkably efficient aerodynamic profile that aids fuel economy, enhances handling stability and reduces wind noise.

But our designers wanted the shape of Genesis to be more than a technical achievement. They wanted its elegantly chiseled forms to convey strength and power. 18-inch Hypersilver-finished wheels produce an active sense of movement, even when standing still. A distinctive grille creates a powerful presence that marks its every detail. The result is a striking design aesthetic – an interpretation of the luxury sedan that is both progressive and timeless.









What has more horsepower than a Lexus GS 460 or an Audi A8? The 4.6-liter, all-aluminum V8 engine in the 2011 Hyundai Genesis – a powerplant named to “Ward’s 10 Best Engines” list for two consecutive years.<sup>1</sup>

With 385 horsepower at 6,500 rpm and 333 lb-ft of torque at just 3,500 rpm, it’s an engine that delivers the broad power band demanded by enthusiast drivers. It also gives Genesis an impressive 10.7 lb/hp power-to-weight ratio. And here’s a nice bonus: It can safely run on both premium and regular fuel while still delivering a rush of adrenaline when you plant your right foot.<sup>2</sup>





## *Exceptional Torsional Rigidity.*

One of the engineering breakthroughs of Genesis is the ability of its body structure to reconcile the conflicting agendas of ride and handling. With 12-14% more torsional rigidity than a Lexus LS, Genesis can deliver laser-like steering and handling poise – while at the same time affording its occupants a ride of consummate composure.



### **5-Link Front And Rear Suspension**

Genesis uses the precisely tuned geometry of five separate links for both the front and rear wheels to help maintain optimal tire contact when cornering. Exactly how exceptional? Genesis pulls 0.87 lateral g's on the skid pad.

### **Amplitude Selective Damping**

SACHS® Amplitude Selective Damping uses sensors to “feel” the road, reading the undulations and bumps before instantly adjusting the damper settings to produce a firm-yet-predictable response.<sup>1</sup> To the Genesis driver, this translates into a smooth, comfortable ride without sacrificing handling stability or control.

<sup>1</sup> SACHS® is a registered trademark of ZF Friedrichshafen AG.



## *Seize Control, Effortlessly.*

The Multimedia Controller lets you command a wide variety of functions, including audio, navigation and telecommunications. It also allows you to access the Driver Information System, where you customize a myriad of settings to your liking – from moving the seat and steering wheel for easy entry, to deciding whether door locks “click” when they engage.



### **Proximity Key**

With your keys comfortably stowed in your pocket or purse, you can lock and unlock your car's doors with the simple push of a button on the door handle. The engine comes to life with a push-button start as well.



### **Cooled And Heated Drivers Seat**

The driver's seat in a Hyundai Genesis is not only heated for those chilly winter mornings. It also comes equipped with a cooling function that helps keep you comfortable when cabin conditions are sunny and warm.

### Rear Camera With Parking Sensors

A series of sensors in both the front and rear bumpers alert Genesis drivers to potential hazards when backing out of parking spaces or driveways using intermittent warning beeps within the cabin. The system's effectiveness is augmented by a rear-view camera, which allows the driver to see below eye level when backing up.



### Lexicon® Discrete Audio

The Lexicon name is revered among audiophiles as a company dedicated to breaking sound barriers. Hyundai Genesis features the Lexicon 7.1 Discrete audio system with an 11-channel, 528-watt digital amplifier and 17 speakers.<sup>1</sup> The result is among the most immersive audio experiences ever available in an automobile.



### XM® Satellite Radio

Hyundai Genesis also comes with XM Satellite Radio (including a complimentary three-month introductory subscription). At your fingertips are more than 170 channels of digital radio. Choose from a variety of formats – sports, talk, news, comedy and the most music on satellite radio – all available in crisp digital sound quality coast-to-coast.<sup>2</sup>



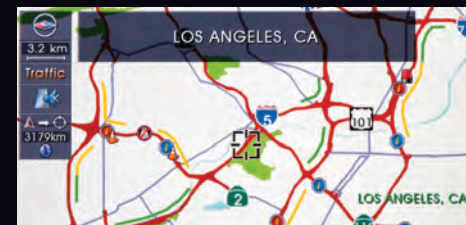
### Adaptive Front Lighting System

This lighting system adjusts headlight beams to match the vehicle's steering angle. Superior illumination around turns alerts you to objects or potential road hazards sooner for improved safety when driving at night.



### HD Radio™

Built-in HD Radio gives you crystal-clear sound from local radio stations, as well as extra FM channels, with more music, news and sports. You'll enjoy on-screen text such as song titles and artist names, all without a subscription.<sup>3</sup>



### Premium Navigation

Genesis guides you with an advanced navigation system featuring an 8-inch screen and voice recognition technology that lets you enter addresses simply by speaking them. Add XM NavTraffic,<sup>®</sup> available with a complimentary 90-day subscription, and you get real-time traffic updates right on your screen.<sup>2</sup>



### Integrated Bluetooth® & Aux Jacks

A stereo mini jack and a USB port let you connect your iPod<sup>®</sup> or other MP3 player to the audio system.<sup>4</sup> Integrated Bluetooth operation, which supports voice-activated phone operation and music streaming, is also featured through the audio and navigation systems.<sup>5</sup>

<sup>1</sup> Lexicon® is a registered trademark of Harman International Industries, Incorporated. <sup>2</sup> XM® Satellite Radio and XM NavTraffic® require an XM subscription sold separately after a complimentary introductory period. All fees and programming are subject to change. XM NavTraffic only available in select markets. See your dealer for details. XM service only available in the 48 contiguous United States. The XM name is a registered trademark of XM Satellite Radio Inc. All other trademarks are property of their respective owners. <sup>3</sup> The HD Radio, HD Digital Radio and HD Digital Radio Alliance are word marks and trademarks of iBiquity Digital Corporation, used under license by the HD Digital Radio Alliance. All rights reserved. <sup>4</sup> iPod integration is enabled when used with the available accessory cable. iPod is a registered trademark of Apple Inc. <sup>5</sup> The Bluetooth® word mark and logos are registered trademarks owned by Bluetooth SIG, Inc., and any use of such marks by Hyundai is under license. Other trademarks and trade names are those of their respective owners.





Genesis comes standard with some of the most advanced safety technologies available. From eight airbags<sup>1</sup> and an ultra-high-strength steel body to passive safety systems that help protect you in the event of an accident and active systems that help you avoid them in the first place, the Hyundai Genesis is engineered as if lives depend on it. Because they do.

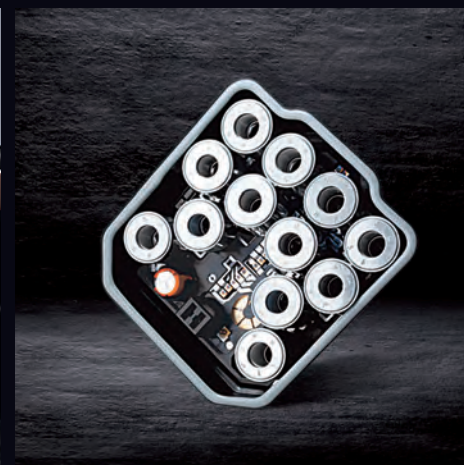
In government crash tests, Genesis received the highest safety rating – five stars. These included tests of crash performance in frontal collision, side impact and rollover situations.<sup>2</sup>

<sup>1</sup> The Supplemental Restraint System (SRS) is designed to work with the 3-point seatbelt system. The SRS deploys in certain frontal and/or side-impact conditions where significant injury is likely. The SRS is not a substitute for seatbelts, which should be worn at all times. Children under the age of 13 should be restrained securely in the rear seat. NEVER place a rear-facing child seat in the front seat of a vehicle that has a passenger-side airbag. <sup>2</sup> Government star ratings are part of the National Highway Traffic Safety Administration's (NHTSA's) New Car Assessment Program ([www.safercar.gov](http://www.safercar.gov)).



## *ESC Saves Lives.*

The NHTSA estimates that if every car were equipped with Electronic Stability Control (ESC), 35% of all single-vehicle accidents could be avoided.<sup>1</sup> That's why every Genesis comes equipped with this technology. It monitors such factors as wheel speed, steering angle and lateral g-forces. When it senses a skid is imminent, ESC adjusts brake and throttle inputs to help keep your Genesis on its intended path.



### **Anti-Lock Braking System**

The ABS that comes standard on Genesis helps drivers maintain steering control in emergency braking situations. Electronic Brake-force Distribution maximizes brake pressure at each wheel to further improve braking performance.

### **Traction Control**

For greater control in adverse conditions, Genesis uses an advanced Traction Control System that senses wheel spin during acceleration. Engine power is reduced and/or braking pressure applied to the wheel that is slipping, effectively re-routing power to the wheel that has greater traction.<sup>2</sup>

### **Electronic Active Head Restraints**

The front-seat head restraints in a Genesis are active – designed to move forward instantly on impact, reducing the likelihood of severe neck injury in a rear-end collision. Because they are electronic, they react faster than mechanical systems, which increases their effectiveness.

### **Brake Assist**

Studies show that drivers frequently don't apply brake pedal pressure hard enough, or quickly enough, in a panic stop. Brake Assist senses emergency braking situations and immediately applies maximum braking pressure to minimize the vehicle's stopping distance.

<sup>1</sup> Electronic Stability Control (ESC) cannot control your vehicle's stability under all driving situations. ESC is not a substitute for safe driving practices. No system, no matter how advanced, can overcome physics or correct poor driving. The driver is always responsible for controlling the vehicle and must use caution to avoid loss of control in all driving conditions. Speed, road conditions and driver steering input will effect whether ESC can help prevent loss of control. See Owner's Manual for details. <sup>2</sup> The Traction Control System (TCS) is meant to enhance conscientious driving habits and is not a substitute for safe driving practices.



#### **HID Adaptive Front Lighting System**

Significantly brighter than conventional lamps, these High Intensity Discharge (HID) headlights are auto-leveling for improved visibility when driving uphill or downhill. The beams also adjust automatically to the position of the car for optimal visibility around corners.





BEST

10 YEARS  
100,000 MILES

5 YEARS  
60,000 MILES

7 YEARS  
UNLIMITED MILES

5 YEARS  
UNLIMITED MILES

## 2011 GENESIS\_FEATURES

		KIRIWWW 72<	KIRIWWW 82:
WEJIX] JIEXYVIW	Electronic Stability Control with Traction Control System	S	S
	4-wheel Anti-lock Braking System, Electronic Brake-force Distribution, Brake Assist	S	S
	Advanced driver and front passenger airbags with Occupant Classification System	S	S
	Front and rear side-impact airbags, seat-mounted	S	S
	Front and rear side-curtain airbags, roof-mounted	S	S
	Electronic active front head restraints	S	S
	3-point seatbelts, all seating positions; front seatbelt pretensioners, force limiters, adjustable belt anchors	S	S
	Tire Pressure Monitoring System	S	S
	Front and rear crumple zones	S	S
	Anti-theft system with engine immobilizer	S	S
I\XIVISV JIEXYVIW	Automatic headlights	S	S
	High Intensity Discharge Xenon auto-leveling headlights	T	S
	Adaptive Front Lighting System (auto-cornering)	T	S
	Front fog lights	S	S
	Solar control glass	S	S
	Dual folding heated power side mirrors with turn signal indicators	S	S
	Proximity key entry	S	S
	Rain-sensing windshield wipers	P	S
	Front and rear parking assistance sensors	T	S
	Rearview backup camera	PN	S
Lower bodyside chrome trim	-	S	
IIRXIVISV JIEXYVIW	Power tilt-and-slide sunroof with one-touch open/close and sliding sunshade	P	S
	Dual front automatic temperature control with outside temperature display	S	S
	Auto-defogging windshield with humidity sensor	P	S
	In-dash navigation system with touchscreen display and XM NavTraffic®	PN	S
	In-dash navigation system with multimedia controller, Driver Information System and XM NavTraffic®	T	S
	Lexicon® surround sound audio with 14 speakers	P	-
	Lexicon® 7.1 Discrete surround sound audio system with 17 speakers	T	S
	In-dash 6-disc CD changer	P	S
	In-dash 6-disc DVD changer	T	S
	Turn signal lever – EZ Lane Change Assist	S	S
	XM® Satellite Radio	S	S
	iPod® / USB and auxiliary input jacks	S	S
	Leather-wrapped dashboard and door trim inserts	P	S
Smart Cruise Control	T	S	

		KIRIWW 72<	KIRIWW 82:
IRXIVISV JIEXYVIW	Integrated Bluetooth® hands-free phone system	S	S
	Proximity key push button engine start	S	S
	Leather seating surfaces	S	-
	Ultra-premium leather seating surfaces	P	S
	Heated power front seats	S	S
	Cooled driver seat	T	S
	Leather-wrapped steering wheel and shift knob	S	S
	Integrated Memory System (driver seat, side mirrors, steering wheel)	P	S
	Power tilt-and-telescopic steering wheel	P	S
	Power rear sunshade	P	S
	Electroluminescent gauges	S	S
	Electrochromic auto-dimming rearview mirror with compass	S	S
	HomeLink® integrated transceiver	S	S
	Multi-function trip computer (distance to empty, fuel economy, average speed, trip timer / distance)	S	S
	Sunglass holder	S	S
IRKIRIW	3.8-liter, 24-valve DOHC V6	S	-
	4.6-liter, 32-valve DOHC V8	-	S
	Dual Continuously Variable Valve Timing	S	S
	Horsepower @ rpm, regular unleaded	290 @ 6200	378 @ 6500
	Horsepower @ rpm, premium fuel	290 @ 6200	385 @ 6500
	Torque (lb-ft @ rpm), regular unleaded	264 @ 4500	324 @ 3500
	Torque (lb-ft @ rpm), premium unleaded	264 @ 4500	333 @ 3500
	Compression ratio	10.4 : 1	10.4 : 1
	All-aluminum block and heads	S	S
	Multi-port programmed fuel injection	S	S
	Variable intake and exhaust induction system	S	S
	Hydraulic motor mounts	S	S
	Chrome-tipped dual exhaust	S	S
HVIZIXVEIR	Rear-wheel drive	S	S
	Aisin® electronic 6-speed automatic transmission with SHIFTRONIC®	S	-
	ZF® electronic 6-speed automatic transmission with SHIFTRONIC®	-	S
	Final drive ratio	3.909	3.133

S = STANDARD    P = PREMIUM PACKAGE    PN = PREMIUM NAVIGATION PACKAGE    T = TECHNOLOGY PACKAGE    - = NOT AVAILABLE

2011 GENESIS\_FEATURES

		KIRIWWW 72<	KIRIWWW 82:
FSHJ3 WYWTIRWISR3 GLEWWW	4-wheel independent suspension, front 5-link virtual kingpin axis, rear 5-link	S	S
	SACHS® Amplitude Selective Damping gas shock absorbers, front and rear	S	S
	Stabilizer bars (mm), front / rear	25.0 / 17.0	25.0 / 18.0
	Power rack-and-pinion steering, engine-RPM-sensing	S	-
	Electro-hydraulic power steering	-	S
	4-wheel anti-lock disc brakes	S	S
	17-inch, split-spoke Euroflange alloy wheels with P225 / 55R tires	S	-
	18-inch, 9-spoke Hypersilver Euroflange alloy wheels with P235 / 50R tires	PN	-
	18-inch, split-spoke Hypersilver Euroflange alloy wheels with P235 / 50R tires	T	S
	Turning diameter (ft), curb to curb	36.0	36.0
	Electronic parking brake with automatic vehicle hold	T	S
I\XIVISVHIQIRWISRW	Wheelbase (in)	115.6	115.6
	Length (in)	195.9	195.9
	Width (in), excluding mirrors	74.4	74.4
	Height (in)	58.1	58.3
	Track (in), front / rear	63.8 / 64.4	63.1 / 63.8
	Coefficient of drag	0.27	0.27
	Curb weight (lbs)	3897	4120
	Curb weight (lbs)	3897	4120
	IRXIVISVHIQIRWISRW	Head room (in), front / rear	40.4 / 37.7
Leg room (in), front / rear		44.3 / 38.6	44.3 / 38.6
Shoulder room (in), front / rear		58.3 / 57.9	58.3 / 57.9
Hip room (in), front / rear		54.9 / 54.3	54.9 / 54.3
Passenger volume (cu ft)		109.4	109.4
Cargo volume (cu ft)		15.9	15.9
Total interior volume (cu ft)		125.3	125.3
EPA size classification		Large Car	Large Car
ITEQIPEKIWXIQEXIW3JYIPGETEGIX]	Fuel economy (city / highway / combined)	18 / 27 / 21	17 / 25 / 19
	Fuel tank capacity (gal)	19.3	20.3

Fuel economy estimated by EPA for comparison. While the information contained in this brochure was correct at time of printing, specifications and equipment can change. Feature comparisons based on competitor information available at time of printing. No warranty or guarantee is being extended in this brochure, and Hyundai reserves the right to change product specifications and equipment at any time without incurring obligations. Some vehicles are shown with optional equipment. Specifications apply to U.S. vehicles only. Please contact your Hyundai dealer for current vehicle specifications. As part of Hyundai's commitment to a sustainable environment, this brochure is printed using paper certified by the Forest Stewardship Council. FSC certification helps ensure that the highest social and environmental standards are met in the making of the paper we use, contributing to conservation, responsible management, and community level benefits for people near the forests.





GENESIS 3.8

**3.8 standard features include:**

- 3.8L DOHC V6 with Dual CVT (290HP)
- 6-speed automatic transmission with SHIFTRONIC®
- Front & rear independent 5-link suspension
- SACHS® Amplitude Selective Damping shock absorbers
- 17-inch Euro angle alloy wheels with P225/55R17 tires
- 4-wheel anti-lock disc brakes with Electronic Brake-force Distribution and Brake Assist
- Electronic Stability Control and Traction Control System
- Electronic active front head restraints
- Automatic High Intensity Discharge Xenon headlights

- Fog lights
- 8 airbags: Advanced dual front airbags with Occupant Classification System (OCS), front and rear seat-mounted side-impact airbags, and roof-mounted side-curtain airbags
- Acoustic laminated windshield and front windows
- Heated dual power outside mirrors with turn signal indicators
- Leather seating surfaces
- Power heated front seats
- Power windows with front auto-down/up with pinch protection
- Electroluminescent gauge cluster

- Proximity key with push-button start
- Leather-wrapped steering wheel with tilt
- Steering-wheel-mounted cruise and audio controls
- Dual front automatic temperature control
- Electrochromic auto-dimming rearview mirror w/ compass
- HomeLink® integrated transceiver<sup>1</sup>
- AM/FM/XM®/CD/MP3 audio system with 7 speakers<sup>2</sup>
- iPod®/USB and MP3 auxiliary input jacks
- Bluetooth® hands-free phone system with integrated display
- Carpeted floor mats

**premium package:**

- + Power tilt-and-slide glass sunroof
- + Ultra-premium leather seating surfaces
- + Tailored leather-wrapped dash & door trim inserts
- + Leather-wrapped power tilt-and-telescopic steering wheel
- + Drivers seat 4-position Integrated Memory System
- + Lexicon® AM/FM/XM®/CD/MP3 surround sound audio system with HD Radio® and 14 speakers<sup>2</sup>
- + Rain-sensing wipers with auto defogging windshield
- + Power rear sunshade

**premium navigation package:**

- Requires Premium Package
- + 18-inch Hypersilver Euro angle alloy wheels w/ P235/50R18 tires
- + Navigation system w/ 7-inch touchscreen and XM NavTrac<sup>®</sup> c<sup>®2</sup>
- + Rearview camera

**technology package:**

- Requires Premium Package and adds:
- + Lexicon® 7.1 Discrete surround-sound audio system w/ 17 speakers
- + 6-disc DVD changer
- + Distance-sensing Smart Cruise Control

- + Driver Information System with multimedia controller
- + Advanced nav system w/ 8-inch touchscreen & XM NavTrac<sup>®</sup> c<sup>®2</sup>
- + Bluetooth® hands-free phone system with integrated display
- + Electronic parking brake with automatic vehicle hold
- + Cooled and heated front drivers seat
- + Aluminum interior accents
- + 18-inch Hypersilver Euro angle alloy wheels with P235/50R18 tires
- + High Intensity Discharge Xenon auto-leveling headlights
- + Adaptive front lighting system
- + Front and rear parking assistance system
- + Rearview backup camera



GENESIS 4.6

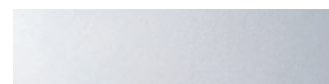
**4.6 standard features:**

- Includes 3.8 Technology Package Equipment plus:
- + 4.6L DOHC V8 with 385HP (premium fuel) / 378HP (regular)
- + ZF® 6-speed automatic transmission with SHIFTRONIC®

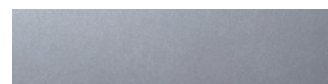
- + Electro-hydraulic power steering
- + Chrome lower bodyside moldings
- + Illuminated door sill plates

- + Electrochromic auto-dimming outside mirrors
- + Woodgrain-trimmed leather steering wheel

**EXTERIOR\_ COLOR CHOICES**



WHITE SATIN PEARL



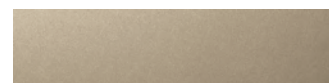
PLATINUM METALLIC



STERLING BLUE METALLIC



SAPPHIRE BLUE PEARL



CHAMPAGNE BEIGE METALLIC



CABERNET RED PEARL



TITANIUM GRAY METALLIC



BLACK NOIR PEARL

**INTERIOR\_ COLOR CHOICES**



CASHMERE



JET BLACK



SADDLE



ULTRA-PREMIUM CASHMERE

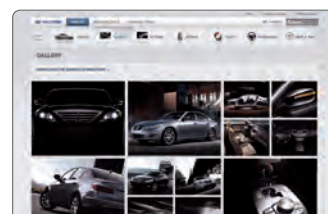


ULTRA-PREMIUM JET BLACK



ULTRA-PREMIUM SADDLE

**WEBSITE\_ HYUNDAI.COM**



Be sure to visit our website, where you can build your Genesis, locate a Hyundai dealer near you, and best of all – schedule a test drive.

<sup>1</sup> HomeLink is a registered trademark of Johnson Controls, Inc. <sup>2</sup> XM® Satellite Radio and XM NavTraffic® require XM subscription sold separately after complimentary 90-day introductory period.

