

2017 HYUNDAI

ELANTRA





ماد خودرو فارما

تلفن: ۰۲۱-۸۸۸۶۲۰۸۵

Farma93.com

¹ Available on Elantra SE, standard on Elantra Limited and Eco. ² Available on Elantra Limited. Smart Cruise Control (SCC) is not a collision avoidance or warning device. SCC is for highway use only and should not be used in poor weather, heavy or varying traffic, or on winding or slippery roads. The driver remains responsible for slowing or stopping the vehicle to avoid a collision. Automatic Emergency Braking (AEB) with Pedestrian Detection detects pedestrians, but not in all conditions. The system initiates full braking at speeds between 5-28 mph when a pedestrian is standing, or from 5-43 mph when a pedestrian is moving. AEB is not a substitute for safe driving. See Owner's Manual for details and limitations. ³ Available on Elantra SE, standard on Elantra Limited and Eco. Delayed availability on Elantra GT. ⁴ Available on Elantra Limited.



ELANTRA GT Tech Package in Symphony Air Silver / ELANTRA LIMITED Ultimate Package in Electric Blue



¹ Motor Trend, "15 Cool Facts and Features On The 2017 Hyundai Elantra", December 2015. ² Claim based on comparison of specifications on manufacturer websites. ³ EPA estimates for comparison only. Mileage may vary. Your actual mileage will vary with options, driving conditions, driving habits and vehicle's condition. ⁴ Electronic Stability Control (ESC) cannot control your vehicle's stability under all driving situations. ESC is not a substitute for safe driving practices. No system, no matter how advanced, can overcome physics or correct poor driving. The driver is always responsible for controlling the vehicle and must use caution to avoid loss of control in all driving conditions. Speed, road conditions and driver steering input will affect whether ESC can help prevent loss of control. See Owner's Manual for details.

ELANTRA ECO in Shale Gray Metallic

PRECISION ENGINEERING

HOW MUCH BETTER IS THE NEW ELANTRA? ASK A HYUNDAI ENGINEER.

When your goal is to improve, it helps to have specific numbers as your target. In the all-new Elantra, our engineers aimed for a lighter yet stronger body able to handle higher levels of engine performance. By reinforcing 53 percent of the vehicle's body structure with advanced high-strength steel, torsional rigidity and bending strength were improved over the previous model. That translates into a compact sedan with the supple ride and confident handling you'd expect in a larger, more substantial vehicle.

That rigid chassis is the ideal platform for Elantra's new 2.0L Atkinson cycle engine with a next-generation 6-speed automatic transmission. On the 2017 Elantra SE and Limited, it delivers more standard horsepower than the 2016 Toyota Corolla or Nissan Sentra.² Elantra's sleek new shape? It records a mere .27 coefficient of drag, making it more aerodynamic than a Nissan LEAF EV.²

The new Elantra is also quieter, thanks to extensively applied sound absorption materials and a variety of noise reduction strategies like front door glass that's now .5 mm thicker. See, there are those numbers again.



REDESIGNED REAR SUSPENSION

Once Elantra engineers achieved a more rigid chassis, they devised a new rear suspension geometry that allowed them to fine tune it for a balance of ride comfort and handling control. The suspension on our 2017 Elantra Sport debuting in fall 2016 is even more advanced, resulting in unparalleled agility and driving dynamics in its class.

EQUIPPED FOR EXTENDED FUN

New for 2017, the Elantra Eco sports a turbocharged 1.4L engine that pours up to 156 lb-ft of torque onto the pavement. The same 7-speed automatic Dual Clutch Transmission that improves acceleration also boosts Elantra Eco to an EPA-estimated 40 MPG on the highway with unsurpassed 35 MPG in combined city/highway driving.³ Your wallet and your right foot will both approve.

ENHANCED STABILITY AND TRACTION

The new Elantra uses Electronic Stability Control to give you confident response whenever you're steering through a turn. It automatically adjusts the engine, steering and braking system to help maintain sure-footed stability.⁴ Elantra's Traction Control and Anti-lock Braking System also assist by working together to help prevent wheel spin when accelerating on slippery surfaces.



CURTAIN CALL

One way Elantra SE, Eco and Limited are able to achieve a remarkable .27 drag coefficient is with an innovative "wheel air curtain" design. It manages and directs the flow of air from the front grille to help minimize air turbulence around the front wheels. An optimized underbody structure and longer trunk line also enhance Elantra's uncanny aerodynamics.

امداد خودرو فارما

تلفن شبانه روزی: ۰۲۱-۸۸۸۶۲۰۸۵

FarmaSOS.com



¹ Claim based on comparison of specifications on manufacturer websites. The Supplemental Restraint System (SRS) is designed to work with the 3-point seatbelt system. The SRS deploys in certain frontal and/or side-impact collisions where significant injury is likely. The SRS is not a substitute for seatbelts, which should be worn at all times. Children under the age of 13 should be restrained securely in the rear seat. NEVER place a rear-facing child seat in the front seat of a vehicle that has a passenger-side airbag. ² Available on Elantra SE, standard on Limited and Eco. Do not rely completely on Blind Spot Detection (BSD) and be sure to use proper lane changing procedures. BSD may not detect every object or vehicle and will not prevent accidents. Lane Change Assist provides an audible and visual alert if the turn signal is activated and another vehicle in the blind spot is sensed. There are limitations to the function, range, detection and clarity of the system. Rear Cross-traffic Alert is active when the vehicle is in reverse and backing at a speed less than 6 mph. See Owner's Manual for further product details and limitations. ³ Forward Collision Warning is intended to be a supplement to safe driving practices. The system is not designed to detect certain stationary objects such as trees or poles, and may not detect all vehicles under certain conditions. The system does not provide a braking function. The driver is responsible for being attentive and maintaining control of the vehicle, and should not wait for the system's alerts before braking as there may not be sufficient time to brake safely. ⁴ Available on Elantra Limited. Lane Departure Warning with Lane Keep Assist operates above approximately 44 mph and only when the lane markings are clearly visible on the road. It will not prevent loss of control. Refer to your Owner's Manual for more information.

ELANTRA LIMITED Ultimate Package in Electric Blue

ADVANCED SAFETY

SAFETY THAT STARTS WITH SEVEN AIRBAGS. AND ENDS WAY, WAY BEYOND THAT.

Beneath the all-new Elantra's stylish skin lies an updated chassis design reinforced with more than 50 percent advanced high-strength steel. On the road, this translates into more precise handling that's long on enhanced safety benefits.

If you've done your homework, you know the 2017 Elantra has more advanced safety technology than any model we've ever built. And more advanced safety features than any model in its class.¹

The list is long, highlighted by available Blind Spot Detection with Rear Cross-traffic Alert and Lane Change Assist.² Elantra Limited features available Forward Collision Warning³ with Automatic Emergency Braking, Lane Departure Warning with Lane Keep Assist⁴ and Smart Cruise Control.

Elantra Limited is also the first car in its segment to include Pedestrian Detection with its Automatic Emergency Braking function. It's all to make the all-new Elantra the kind of car that makes you feel comfortable and secure. Every time you drive it.



FRONT PEDESTRIAN DETECTION

The 2017 Hyundai Elantra is the first car in its segment to feature Pedestrian Detection. It's part of Elantra's available Automatic Emergency Braking, an advanced safety technology that senses a vehicle or pedestrian in front of you and warns the driver of a potential collision. If the driver doesn't maneuver to avoid impact, the system will apply emergency braking.

LANE DEPARTURE WARNING WITH LANE KEEP ASSIST

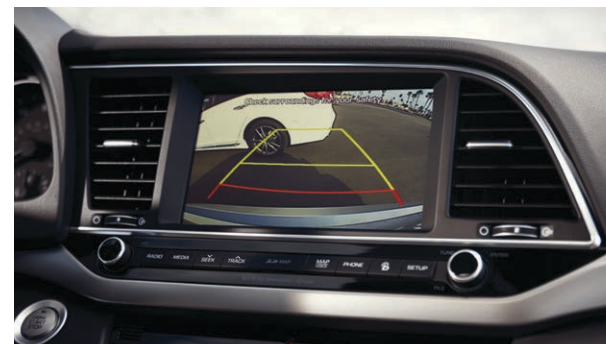
The new Elantra adds this safety innovation to help keep you out of harm's way. It detects lane markings and alerts the driver if the car begins to drift outside of the lane without signaling. The system will apply corrective steering assistance as necessary.

BLIND SPOT DETECTION

It can be tough sometimes to spot a car approaching you from your flanks. The new Elantra assists drivers with Blind Spot Detection safety technology. Using radar sensors located in the rear bumper, it helps detect vehicles in the driver's blind spot and warns with audio and visual alerts.

REARVIEW CAMERA WITH DYNAMIC GUIDELINES

Backing out of driveways or into parking spaces can be a royal pain. Which is why dynamic guidelines are now part of the rearview camera on the 2017 Elantra. Yellow and red guidelines on the center console monitor bend to match your steering wheel angle and convey the intended path of your vehicle while backing up. Elantra's available Rear Cross-traffic Alert warns the driver if cars are approaching from the side while you're in reverse gear.



امداد خودرو فارما

تلفن شبانه روزی: ۰۲۱-۸۸۸۶۲۰۸۵

FarmaSOS.com



ایراد خودرو فارما

تلفن شبانه روزی ۰۲۱-۸۸۸۶۲۰۸۵

FarmaSOS.com

¹ Available on Elantra SE and GT. Standard on Elantra Limited and Eco. ² Standard on Elantra Limited, available on Elantra GT. Only use Blue Link and corresponding devices when it is safe to do so. Blue Link is available on most new Hyundai vehicles. Blue Link subscription service agreement required. Features vary by subscription plan. Blue Link service works using CDMA-based cellular networks in the 50 United States. Blue Link service is not available where there is no cellular coverage, particularly in enclosed or remote areas. Service availability may be affected by signal strength, foliage, weather, topographical conditions (mountains) and nearby structures (tall buildings, tunnels) and other factors. For additional details and system limitations visit HyundaiBlueLink.com. Remote Vehicle Start is only available for push button start equipped vehicles with an automatic transmission or a Dual Clutch Transmission. Not available on all models. Remote Climate Control available on properly equipped models with fully automatic temperature control.

ELANTRA LIMITED Ultimate Package in Beige Leather



امداد خودرو فارما

تلفن شبانه روزی: ۰۲۱-۸۸۸۶۲۰۸۵

FarmaSOS.com

امداد خودرو فارما

تلفن شبانه روزی: ۰۲۱-۸۸۸۶۵۰۸۵

FarmasOS.com

¹ Claim based on comparison of specifications on manufacturer websites. ² Government 5-Star Safety Ratings are part of the National Highway Traffic Safety Administration's (NHTSA) New Car Assessment Program (safercar.gov).



ELANTRA GT Tech Package in Galactic Gray



امداد خودرو فارما

تلفن شبانه روزی: ۰۲۱-۸۸۸۶۲۰۸۵

FarmaSOS.com

CARGO TO GO

Elantra GT's interior design offers more total volume and maximum cargo capacity than Ford Focus, Mazda3 and VW Golf models. With up to 51 cubic feet of space with the rear seats folded down, it even has more cargo capacity than the Nissan Juke.¹ The rear seats split 60/40, and the seats fold flat to create an ideal cargo space for handling large packages or your weekend sporting gear with ease.

VENTILATED FRONT SEATS

In a first for any car in its segment, Elantra GT offers available ventilated front seats. Cool air circulates through perforations in the seat trim, allowing both front-seat occupants to enjoy a more comfortable ride, even after long hours on the road.

PANORAMIC SUNROOF

With an available panoramic sunroof, Elantra GT opens up wide to the sky above, letting light shine down into its spacious cabin. The pleasure is exquisite, whether it's a shining sun or the nighttime glow of the moon and stars.

NEW VALUE EDITION

Want the finer things in life for less? Check out everything the 2017 Elantra GT Value Edition offers: A Proximity Key with push button start. A leather steering wheel and shift knob with leather seating surfaces. Those front seats? They're heated, and the driver enjoys a power seat with power lumbar and an auto-up window. The long list of extras also includes foglights, auto headlight control and a sliding center armrest. Feels good just thinking about it. Feels even better when you realize what you'll save.





اندازه فارما

تلفن شبانه روزی: ۰۲۱-۸۸۸۶۲۰۸۵

FarmaSOS.com

¹ Standard on Elantra Limited and Eco models, available on Elantra SE and GT. ² All SiriusXM services require a subscription, sold separately by SiriusXM after a three-month trial subscription. Fees and taxes apply. All fees and programming are subject to change. To cancel, please call 1-866-635-2349. See our Customer Agreement for complete terms at siriusxm.com. Sirius, XM and all related marks and logos are trademarks of Sirius XM Radio Inc. ³ Android Auto works with smartphones enabled to run on Google's Android 5.0 OS and above. Google, Android and Android Auto are registered trademarks of Google Inc. Apple CarPlay works with iPhone 5s, iPhone 5c, iPhone 5 and later models running the latest version of iOS 7 and above. Apple is a registered trademark of Apple Inc. ⁴ Requires display audio or navigation system with SiriusXM subscription. ⁵ Remote Start is only available for push button start equipped vehicles with an automatic transmission or Dual Clutch Transmission. Not available on all models.

ELANTRA SE
Tech Package in Gray Cloth



ELANTRA INNOVATION

ALL CARS ARE GETTING SMARTER. ELANTRA IS JUST GETTING THERE SOONER.

You've already read about how the all-new Elantra is designed to help people drive with greater levels of performance, efficiency, comfort and safety. It's also designed so you can be better informed and entertained. For starters, your smartphone and your Elantra are now on better speaking terms than ever. Our 2017 models allow you to seamlessly sync your smartphone's content and apps like Pandora® to the center console's 7" LCD screen.¹

Add the available navigation on our Limited model, and an 8" split-screen display shows both maps and music settings – including HD Radio™ and SiriusXM Satellite Radio.² The navigation system also includes voice commands and junction view lane guidance.

Speaking of life in the fast lane, we've made improvements to the latest generation of Hyundai Blue Link, too. Our dynamic Connected Car System combines safety, car care and remote functionality to help Elantra owners simplify their lives. Who says you can't download more time into your day?

امداد خودرو فارما

تلفن شبانه روزی: ۰۲۱-۸۸۸۶۲۰۸۵

FarmaSOS.com

STAY IN SYNC

Elantra supports Apple CarPlay, the smarter, safer way to use your iPhone in the car. Make calls, listen to Apple Music, send messages and get directions with Siri or through Elantra's touchscreen. Elantra also supports Android Auto, which lets you use your compatible Android phone to help access Google Maps, listen to music from the Google Play store, and more.³

CLARI-FI YOUR MUSIC

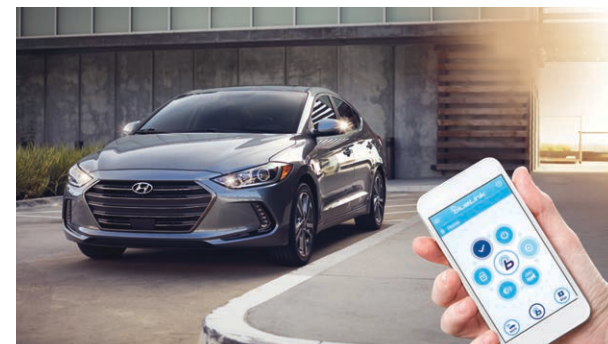
Elantra Limited is the first in its segment to offer Clari-Fi™ Music Restoration Technology. Today's downloaded or streamed music is digitally compressed – removing up to 90 percent of the audio details originally recorded in your favorite songs. Music that's been 'Clari-Fied' sounds clearer, crisper and more dynamic. So now, when you listen to your music through Elantra's available Infinity® 8-speaker premium audio system, it's more faithful to the original recording.

NEVER MISS A BEAT

Here's a feature music lovers will appreciate: TuneStart. A select number of preset SiriusXM channels allow you to rewind to the beginning of a song whenever you switch channels. No more catching it mid-song and missing half the fun.⁴

REMOTE ACCESS

Elantra Limited now comes standard with the next generation of Blue Link. As part of Blue Link, you can use an app to remotely start, stop and set the climate controls of your car. The Remote Start function now includes a timer that lets you set how long you want the engine to run. And Remote Climate Control now gives you the option to turn on the front window defroster before you get into your car.⁵



EXTERIOR COLORS | ELANTRA



Quartz White Pearl



Symphony Silver



Mineral Beige



Lakeside Blue



Phantom Black



Electric Blue



Scarlet Red



Shale Gray Metallic

EXTERIOR COLORS | ELANTRA GT



Black Noir Pearl



Ceramic White



Galactic Gray



Symphony Air Silver

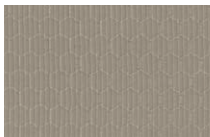


Scarlet Red Pearl

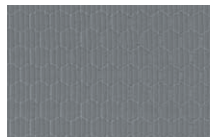


Electric Blue Metallic

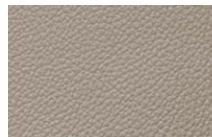
INTERIOR COLORS | ELANTRA



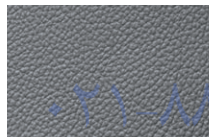
SE/Eco Beige Cloth



SE/Eco Gray Cloth



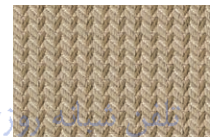
Limited Beige Leather



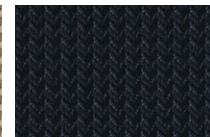
Limited Gray Leather



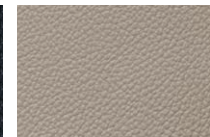
Limited Black Leather



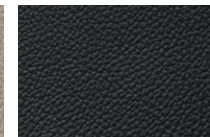
Standard Premium
Beige Cloth



Standard Premium
Black Cloth



Value Edition and Tech
Package Beige Leather



Value Edition and Tech
Package Black Leather

INTERIOR COLORS | ELANTRA GT

WHEELS | ELANTRA



15" Steel Wheel
(Standard on SE)



15" Alloy Wheel
(Standard on ECO)



16" Alloy Wheel
(SE Pop Pkg and Tech Pkg)



17" Alloy Wheel
(Standard on Limited)

WHEELS | ELANTRA GT



16" Steel Wheel
(Standard)



17" Alloy Wheel
(Optional)

EXTERIOR DIMENSIONS

| | ELANTRA | ELANTRA GT |
|-----------------------------------|--------------|--------------|
| • Wheelbase | 106.3 in | 104.3 in |
| • Overall Length | 179.9 in | 169.3 in |
| • Overall Width, excludes mirrors | 70.9 in | 70.1 in |
| • Overall Height | 56.5 in | 57.9 in |
| • Tread Width, front/rear [15"] | 61.5/61.9 in | - |
| • Tread Width, front/rear [16"] | 61.2/61.6 in | 61.0/61.5 in |
| • Tread Width, front/rear [17"] | 61.0/61.3 in | 61.0/61.5 in |

INTERIOR DIMENSIONS

| | ELANTRA | ELANTRA GT |
|---------------------------------|--------------|-----------------|
| • Head Room, front/rear | 38.8/37.3 in | 40.1/37.9 in |
| • Legroom, front/rear | 42.2/35.7 in | 42.0/34.6 in |
| • Shoulder Room, front/rear | 56.2/55.3 in | 55.9/54.9 in |
| • Hip Room, front/rear | 53.4/51.9 in | 53.1/51.0 in |
| • Passenger Volume | 95.8 cu ft | 96.1 cu ft |
| • Cargo [GT Rear Seats Up/Down] | 14.4 cu ft | 23.0/51.0 cu ft |
| • Total Interior Volume | 110.2 cu ft | 119.1 cu ft |

EPA MILEAGE ESTIMATES

| | SE | Popular Equipment / Tech Package | Eco 7-speed DCT | Limited | GT |
|--------------------------|----------|----------------------------------------|--------------------|----------|----------|
| • Horsepower | 147 HP | 147 HP | 128 HP | 147 HP | 173 HP |
| • Manual Transmission | 26/36/29 | - | - | - | 24/32/27 |
| • Automatic Transmission | 29/38/33 | 28/37/32 | 32/40/35 | 28/37/32 | 24/32/27 |
| • Fuel Tank Capacity | 14.0 gal | 14.0 gal | 14.0 gal | 14.0 gal | 13.2 gal |
| • EPA Classification | Midsize | Midsize | Midsize | Midsize | Midsize |

(City/Highway/Combined)

ELANTRA SE

KEY STANDARD FEATURES

- 147-hp, 2.0L Atkinson cycle 4-cylinder engine with D-CVVT
- 6-speed manual or available 6-speed automatic transmission with SHIFTRONIC® control
- Drive Mode Select (A/T only)
- Motor Driven Power Steering
- 15" steel wheels with full wheel covers
- Front 2-speed intermittent wipers
- Projector headlights with Daytime Running Lights
- Solar glass control
- Remote keyless entry system with alarm
- Power bodycolor side mirrors
- Power door locks
- One-touch driver's auto-down window
- AM/FM/SiriusXM/CD/MP3 audio system with 6 speakers
- Smartphone/USB auxiliary input jacks
- Cloth seating surfaces
- Air conditioning
- 3.5" LCD cluster display
- Tilt-and-telescopic steering wheel
- 6-way adjustable driver seat with height adjustment for driver and passenger
- Adjustable front head restraints
- Maplights with sunglass holder, dome lamp and trunk lamp
- Front and rear door map pockets
- Lower console box with sliding cover
- Center armrest with flip-up storage
- 60/40 split fold-down rear seatback with adjustable center head restraint and fixed outer head restraints
- Rear center console-mounted cupholders
- Driver blind spot mirror
- 7-airbag safety system with driver's knee airbag
- Advanced dual front airbags with Occupant Classification System
- Vehicle Stability Management
- Electronic Stability Control and Traction Control System
- Hillstart Assist Control
- Anti-lock Braking System with Electronic Brake-force Distribution
- Tire Pressure Monitoring System
- Trunk lid cover
- Temporary spare tire

POPULAR EQUIPMENT PACKAGE | SE A/T Standard Features plus:

- + 16" alloy wheels
- + 7" color touchscreen audio display
- + HD Radio™ technology
- + Android Auto™ support
- + Apple CarPlay™ support
- + Rearview camera with dynamic parking guidelines
- + Automatic headlight control
- + Steering wheel audio controls
- + Bluetooth® hands-free phone system with audio streaming
- + Cruise control
- + Heated side mirrors
- + Hood insulator

TECH PACKAGE | SE Popular Equipment Package plus:

- + LED Daytime Running Lights
- + Blind Spot Detection with Rear Cross-traffic Alert and Lane Change Assist – Replaces blind spot mirror
- + Leather-wrapped steering wheel and shift knob
- + Dual zone automatic temperature control with auto-defogger
- + Proximity Key entry with push button start
- + 3.5" TFT instrument cluster display
- + Hands-free smart trunk
- + Door handle approach lights
- + Heated front seats
- + Illuminated vanity mirrors with sunvisor extensions
- + One-touch driver's auto-up window
- + Sliding center armrest
- + Front passenger seatback pocket

ELANTRA ECO

SE Tech Package plus:

- + 128-hp, 1.4L Turbo Gasoline Direct Injection 4-cylinder engine
- + 7-speed EcoShift® Dual Clutch Transmission with SHIFTRONIC® manual control
- + 15" alloy wheels
- + Eco badge
- + Tire Mobility Kit – Replaces temporary spare tire

ELANTRA LIMITED

SE Tech Package plus:

- + 17" alloy wheels
- + Heated power side mirrors with integrated turn signals
- + LED taillights
- + Chrome beltline molding
- + Chrome exterior door handles
- + Unique chrome grille
- + Blue Link® Connected Car System
- + Dual USB charging ports
- + 4-wheel disc brakes
- + Leather seating surfaces
- + Power 6-way adjustable driver seat with lumbar support
- + 60/40 split fold-down rear seatback with adjustable head restraints
- + Rear-seat center armrest with cupholders
- + Limited badge

TECH PACKAGE | Limited Standard Features plus:

- + 8" touchscreen navigation system
- + Infinity® premium audio system with 8 speakers, including center channel and subwoofer
- + Clari-Fi™ Music Restoration Technology
- + 4.2" color TFT instrument cluster display
- + Power tilt-and-slide glass sunroof
- + Heated rear seats
- + Auto-dimming rearview mirror with compass and HomeLink®

ULTIMATE PACKAGE | Limited Tech Package plus:

- + High Intensity Discharge Xenon headlights with Dynamic Bending Light
- + Automatic High Beam Assist
- + Automatic Emergency Braking with Pedestrian Detection
- + Smart Cruise Control
- + Lane Keep Assist
- + Integrated Memory System for driver seat and side mirrors

CLASS-LEADING ADVANCED SAFETY



Blind Spot Detection with Lane Change Assist



Smart Cruise Control



Automatic Emergency Braking

ELANTRA GT

KEY STANDARD FEATURES

- 173-hp, 2.0L Gasoline Direct Injection 4-cylinder engine with D-CVVT
- 6-speed manual or automatic transmission with SHIFTRONIC® control and Active ECO System
- 16" steel wheels with full wheel covers
- Remote keyless entry with alarm
- Power windows and door locks
- Heated side mirrors
- Tilt-and-telescopic steering wheel
- Driver seat height adjustment
- One-touch triple turn signal
- Smartphone/USB auxiliary input jacks
- AM/FM/SiriusXM/CD/MP3 audio system with 6 speakers
- Bluetooth® hands-free phone system with audio streaming
- Premium cloth interior
- Steering wheel audio/cruise/phone controls
- Dual front vanity mirrors/sunvisor extensions
- 60/40 split fold-flat rear seatback
- 4-wheel disc brakes with ABS and EBD
- Vehicle Stability Management
- Electronic Stability Control and Traction Control System
- 7-airbag safety system with driver's knee airbag
- Driver blind spot mirror
- Daytime Running Lights
- Air conditioning with cooled glove box
- Luggage net hooks and outlet
- Hood insulator
- Rear center armrest with cupholders
- Variable intermittent windshield wipers
- Rear window wiper and spoiler

VALUE EDITION | GT Standard Features plus:

- + 17" alloy wheels
- + Sport-tuned suspension
- + Leather seating surfaces
- + Heated front seats
- + Sliding center armrest
- + Front foglights
- + Power driver seat with lumbar support
- + Leather-wrapped steering wheel and shift knob
- + Proximity Key entry with push button start and immobilizer
- + Automatic headlight control
- + One-touch driver's auto-up window

TECH PACKAGE | Value Edition Package plus:

- + Power tilt-and-slide panoramic sunroof
- + Dual automatic temperature control
- + 7" touchscreen navigation system with rearview camera
- + HD Radio™ technology
- + Blue Link® Connected Car System
- + Apple CarPlay™/Android Auto™ support
- + Ventilated front seats
- + Aluminum pedals
- + Hidden cargo-area storage
- + Heated power side mirrors with integrated turn signals



Assurance

HYUNDAIASSURANCE.COM

Our commitment to Hyundai owners doesn't end with the transfer of keys. Wherever the road takes you, we've got your back with Hyundai Assurance, an umbrella of services and benefits that includes America's Best Warranty, 24/7 Roadside Assistance, innovative safety and car care features...and more.



امداد خودرو فارما

تلفن شبانه روزی: ۰۲۱-۸۸۸۶۲۰۸۵

FarmaSOS.com

AMERICA'S BEST WARRANTY

POWERTRAIN
LIMITED WARRANTY

10 YEARS
100,000 MILES

NEW VEHICLE
LIMITED WARRANTY

5 YEARS
60,000 MILES

ANTI-PERFORATION
WARRANTY

7 YEARS
UNLIMITED MILES

24/7 ROADSIDE
ASSISTANCE

5 YEARS
UNLIMITED MILES

See dealer for LIMITED WARRANTY details. Fuel economy estimated by EPA for comparison only. Mileage may vary. While the information contained in this brochure was correct at the time of printing, specifications and equipment can change. Feature comparisons based on competitor information available at the time of printing. No warranty or guarantee is being extended in this brochure, and Hyundai reserves the right to change product specifications and equipment at any time without incurring obligations. Some vehicles are shown with optional equipment. Specifications apply to U.S. vehicles only. Please contact your Hyundai dealer for current vehicle specifications. As part of Hyundai's commitment to a responsible environment, this brochure was printed using paper certified by the Forest Stewardship Council.® FSC® certification helps ensure that the highest social and environmental standards are met in the making of the paper we use, contributing to conservation, responsible management, and community-level benefits for people near the forests.

