

09 HYUNDAI\_ELANTRA

امداد خودرو فارسی

تلفن شماره ۰۲۱-۸۸۸۶۴۰۸۵

Farman905.com



# LET THE

# GOOD

NHTSA 5-STAR FRONTAL CRASH TEST RATING.<sup>1</sup> The roomiest interior in its class. A 10-year powertrain warranty.<sup>2</sup> These are just a few reasons the Elantra makes the left side of your brain so happy. And for the right, we offer stylish looks and the exciting new Elantra Touring.<sup>™</sup> Let the responsible fun begin.

# SENSE ROLL

امداد خودرو فارما

تلفن شبانه روزی ۰۲۱-۸۸۸۶۲-۸۵

FarmaSOS.com





PROVING RESPONSIBILITY DOESN'T HAVE TO BE BORING. Elantra's 2.0-liter engine is a study in paradoxes. It's engineered with a broad powerband for superior responsiveness and driveability, yet boasts emissions low enough to certify the Elantra sedan as a Partial Zero Emissions Vehicle.<sup>3</sup> All while delivering up to an impressive 33 MPG on the highway.<sup>4</sup> Adding to the fun is a 4-wheel independent suspension featuring front MacPherson struts with coil springs and a multi-link rear set-up to deliver excellent handling along with a smooth, controlled ride. Who knew paradoxes could be so entertaining?

# امداد خودرو فارما

تلفن شبانه روزی: ۰۲۱-۸۸۸۶۲۰۸۵

Farma4S.com





TOTAL AUDIO SATISFACTION. Elantra boasts numerous options to keep your ears entertained as you navigate through traffic. Start with more than 170 channels of digital-quality programming courtesy of XM® Satellite Radio along with a complimentary 3-month subscription! You'll also enjoy the convenience of an auxiliary audio input jack as well as a USB port so you can easily connect your favorite portable music player. And all of this sounds amazing through the six-speaker, 172-watt audio system featuring a CD player and an equalizer, so you can play producer as you customize your tunes any way you wish.



HEATED FRONT SEATS

Snow, rain and bitter-cold winter mornings are unfortunate parts of life. But they just became a lot more bearable thanks to the Elantra's heated front seats. Stay warm as owners of lesser cars suffer through the chill.



BLUETOOTH® A built-in microphone and speaker deliver perfect call clarity, and the system has the ability to recognize multiple phones.

ACTIVE AND PASSIVE SAFETY

Before you load your Elantra full of passengers, we fill it with a plethora of cutting-edge active safety features that work dynamically with input from both the driver and the road to help prevent an accident. We also add plenty of passive safety features to protect you when an accident is inevitable.

First, and perhaps the most significant, is Electronic Stability Control<sup>2</sup>, which monitors wheel speed, steering angle, yaw and lateral g-forces to help keep the car in control in treacherous conditions and during emergency maneuvers.

But we don't stop there. We also add Traction Control<sup>3</sup>, ABS, Electronic Brake-force Distribution, Brake Assist, six airbags<sup>4</sup>, active front head restraints, front seatbelt pretensioners, an energy absorbing steering column, a reinforced steel body and a 5-star frontal crash test rating from NHTSA<sup>5</sup>. Whew, it's hard work being this safe. But we think you'll agree it's worth it.

60/40 SPLIT REAR SEATBACK

Hit those weekend flea markets with a vengeance. Be it a new set of bar stools, a pair of skis, or even some quirky "art" that your significant other will loathe, just lower the split-folding rear seatback and your Elantra is happy to oblige.



<sup>1</sup>XM® Satellite Radio requires XM subscription sold separately after first three trial months. All fees and programming subject to change. Traffic and weather channels only available in 21 metropolitan markets. See your dealer for details. XM service only available in the 48 contiguous United States. The XM name is a registered trademark of XM Satellite Radio Inc. All other trademarks are property of their respective owners. <sup>2</sup>Electronic Stability Control (ESC) cannot control your vehicle's stability under all driving situations. ESC is not a substitute for safe driving practices. No system, no matter how advanced, can overcome physics or correct poor driving. The driver is always responsible for controlling the vehicle and must use caution to avoid loss of control in all driving conditions. Speed, road conditions and driver steering input will affect whether ESC can help prevent loss of control. See Owner's Manual for details. <sup>3</sup>The Traction Control System (TCS) is meant to enhance conscientious driving habits and is not a substitute for safe driving practices. <sup>4</sup>The Supplemental Restraint System (SRS) is designed to work with the 3-point seatbelt system. The SRS deploys in certain frontal and/or side-impact conditions where significant injury is likely. The SRS is not a substitute for seatbelts, which should be worn at all times. Children under the age of 13 should be restrained securely in the rear seat. NEVER place a rear-facing child seat in the front seat of a vehicle that has a passenger-side airbag. <sup>5</sup>Government star ratings are part of the National Highway Traffic Safety Administration's (NHTSA's) New Car Assessment Program (www.safercar.gov). 2007 sedan tested with standard side-impact airbags (SABs). The Bluetooth® word mark and logos are registered trademarks owned by Bluetooth SIG, Inc., and any use of such marks by Hyundai is under license. Other trademarks and trade names are those of their respective owners.



#### STEERING WHEEL CONTROLS

Be in total control without ever taking your hands off the steering wheel. Elantra Touring™ comes with steering-wheel-mounted controls for audio as well as cruise control, making driving not only more comfortable but safer, too.



#### IN-FLOOR STORAGE

Keep precious valuables like laptops away from prying eyes with convenient, hidden cargo-area storage. You'll also enjoy added versatility, as you can stow smaller items underneath while keeping the main cargo area free for larger pieces.

#### B&M SPORT SHIFTER

The Elantra Touring features a leather-wrapped B&M® Racing sport shifter. A perfect complement to the 5-speed manual transmission, this stylish yet functional design makes for short throws, quick shifts and sharp looks.



امداد خودرو فارما

تلفن شبانه روزی ۰۲۱-۸۸۸۸۸۸۸۸

FarmaSOS.com



It's where roominess meets sportiness. With class-leading passenger capacity and more maximum cargo space than any competing model, the Elantra Touring has plenty of room to haul friends and gear. And with a sport-tuned suspension and steering modified for quicker turn in and response, it can just plain haul through your favorite hairpin. Add in loads of standard safety features, and you're talking one sweet package.



امداد خودرو فارما

تلفن شبانه روزی: ۰۲۱-۸۸۶۲۰۸۵

FarmaSOS.com

## MORE MAXIMUM CARGO CAPACITY THAN NISSAN MURANO

---

Strange but true, the Elantra Touring tops the 2009 Nissan Murano in maximum cargo capacity, all while delivering up to 31 miles per gallon on the highway.<sup>1</sup> We won't say what mileage the Murano gets, lets just say you could fill the Touring with lots of cool stuff with all the gas money you'll save.

<sup>1</sup>EPA estimates for comparison. Your actual mileage will vary with options, driving conditions, driving habits and vehicle's condition.



## GLS

### STANDARD FEATURES INCLUDE:

- 2.0L, DOHC In-line 4-cylinder engine with CVT
- 5-speed manual transmission
- ABS with 4-wheel disc brakes and EBD
- 15-inch steel wheels with full covers
- Advanced dual front airbags with Occupant Classification System, front seat-mounted side-impact airbags, front and rear side-curtain airbags
- Active front head restraints
- Power windows, door locks and heated side mirrors
- Rear center armrest with cupholders
- Remote keyless entry with alarm and trunk release

### GLS OPTIONS:

- Air conditioning, 172-watt AM/FM/XM®/CD/MP3 audio system, front fog lights, cruise control, power tilt-and-slide sunroof, 4-speed automatic transmission, dual illuminated vanity mirrors



## SE

### INCLUDES ALL STANDARD GLS FEATURES PLUS:

- Electronic Stability Control
- Traction Control System
- Brake Assist
- 16-inch, 5-spoke Euroflange alloy wheels
- Sport-tuned suspension
- B&M Racing® sport shifter, manual transmission
- Front fog lights
- Air conditioning
- Leather-wrapped steering wheel and shift knob
- Steering-wheel-mounted audio and cruise control
- Tilt-and-telescopic steering wheel
- 172-watt AM/FM/XM/CD/MP3 six-speaker audio system with iPod®/USB and auxiliary input jacks

### SE OPTIONS:

- Leather seating surfaces, power tilt-and-slide sunroof, heated front seats, 4-speed automatic transmission



## TOURING™

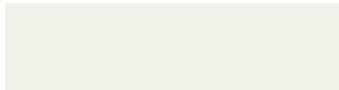
### INCLUDES ALL STANDARD SE FEATURES PLUS:

- 16-inch, 5-split-spoke Euroflange alloy wheels
- 8-way adjustable driver seat
- Driver seat adjustable lumbar support
- Outside temperature gauge
- Rear window wiper and washer
- Rear 12-volt power outlet

### TOURING OPTIONS:

- Power tilt-and-slide sunroof, heated front seats, 17-inch Euroflange alloy wheels with P215/45VR tires, 4-speed automatic transmission

## EXTERIOR COLOR CHOICES



CAPTIVA WHITE  
INTERIOR: GLS BEIGE



LAGUNA SAND  
INTERIOR: GLS BEIGE



APPLE RED PEARL  
INTERIOR: GLS BEIGE, SE BLACK



PURPLE RAIN  
INTERIOR: GLS BEIGE, SE BLACK



REGATTA BLUE  
INTERIOR: GLS BEIGE OR GRAY, SE GRAY



NATURAL KHAKI  
INTERIOR: GLS BEIGE, SE GRAY OR BLACK



VIVID BLUE  
INTERIOR: TOURING BLACK



CHILIPEPPER RED  
INTERIOR: TOURING BEIGE OR BLACK



QUICKSILVER  
INTERIOR: GLS GRAY, SE GRAY OR BLACK  
TOURING BLACK



CARBON GRAY  
INTERIOR: GLS GRAY, SE GRAY OR BLACK  
TOURING BLACK

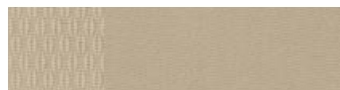


BLACK PEARL  
INTERIOR: GLS BEIGE OR GRAY, SE GRAY OR BLACK  
TOURING BEIGE OR BLACK

## INTERIOR COLOR CHOICES



GLS AND SE PREMIUM GRAY CLOTH



GLS PREMIUM BEIGE CLOTH



SE PREMIUM BLACK CLOTH



SE BLACK LEATHER



SE GRAY LEATHER



TOURING PREMIUM BEIGE CLOTH



TOURING PREMIUM BLACK CLOTH

