

2013  
HYUNDAI

# ACCENT





# THE 2013 ACCENT. YOUR WANTS, RECONCILED WITH YOUR NEEDS.

Do you want style, but need exceptional fuel economy? Whether you're looking at the 4-door or 5-door model, Accent's Fluidic Sculpture design not only turns heads – the aerodynamic shape also helps it slip through the air, so it can sip gas instead of guzzle it. Every 2013 Accent model delivers 40 MPG on the highway – better fuel efficiency than you'll find in a Toyota Yaris or Honda Fit.<sup>1</sup> In fact, Accent's standard MPG rating is best-in-class.<sup>2</sup>

## A “WARD’S 10 BEST” INTERIOR

Do you want a roomy interior filled with comfort, convenience and safety features? Accent 4-door's roominess led the EPA to list it as a class above the Ford Fiesta in size.<sup>3</sup> And it comes standard with things like power heated mirrors, power door locks, power windows, air conditioning, an AM/FM/SiriusXM®/CD/MP3 audio system, iPod®/USB auxiliary jacks and remote keyless entry. Our SE model adds side mirrors with integrated turn signal indicators and an available power sunroof. When you put it all together, the result is a spot on the coveted 2012 Ward's 10 Best Interiors list.<sup>4</sup>

## SO WHAT'S IT LIKE TO DRIVE?

*Edmunds.com* had this say: “The Accent is an entry-level car that doesn't feel like one, look like one or drive like one.”<sup>5</sup> And *Motor Trend*, after comparing Accent SE with six other cars in its class, named Accent “King of the 5-door subcompacts.”<sup>6</sup>

<sup>1</sup>EPA estimates for comparison only. Your actual mileage will vary with options, driving conditions, driving habits and vehicle's condition. <sup>2</sup>Class-leading MPG comparison based on primary sub-compact competitive set defined by Hyundai Motor America, which includes: 2012 Toyota Yaris, Honda Fit, Chevrolet Sonic, Ford Fiesta, Mazda 2 and Nissan Versa. Other Hyundai companies excluded from this comparison. <sup>3</sup>[www.epa.gov](http://www.epa.gov). <sup>4</sup>*Ward's AutoWorld* magazine, May issue. <sup>5</sup>*Edmunds.com* comparison test with 2012 Accent GLS, October 2011. <sup>6</sup>*Motor Trend*, April 2012.

“...this doesn't feel like an economy car on the inside.  
Its interior is typical of Hyundai's current cars, with ritzy materials throughout.”

- *Car and Driver* on the 2012 Hyundai Accent, June 2011



4-DOOR GLS in Boston Red / 5-DOOR SE in Marathon Blue





5-DOOR SE in Premium Black Cloth

## 2013 ACCENT COMFORT & TECHNOLOGY

# CRANK UP THE VOLUME. WE DID.

We're speaking, of course, about interior volume. It's how car interiors are measured, and Accent 5-Door has the most cargo volume of any car in its class. In fact, with the back seats up, Accent's 21.2 cubic feet of cargo space is more than twice that of the Nissan Juke crossover utility vehicle.

Hyundai's engineering labs have been working overtime to ensure you no longer have to spend a fortune to get the room you need, along with the comfort and technology you want. Which is why Accent owners can use remote keyless entry to unlock their car. Once inside, you'll be slipping into a six-way adjustable driver's seat and settling comfortably into a cabin with best-in-class front and rear shoulder room.

What do we do with all that room? Fill it with features like a standard 6-speaker, 172-Watt audio system with SiriusXM® Satellite Radio and iPod®/USB and MP3 auxiliary input jacks.<sup>1</sup> So go ahead, crank up the volume.

<sup>1</sup>iPod® is a registered trademark of Apple Inc. <sup>2</sup>The Bluetooth® wordmark and logos are registered trademarks owned by Bluetooth SIG, Inc., and any use of such marks by Hyundai is under license. Other trademarks are those of their respective owners. <sup>3</sup>SiriusXM® Satellite Radio requires a SiriusXM subscription, sold separately after a free 90-day introductory period. All fees and programming are subject to change. Traffic and weather channels only available in select markets, and SiriusXM service is only available in the 48 contiguous United States. See your dealer for details. The SiriusXM name is a registered trademark of SiriusXM Satellite Radio Inc. All other trademarks are property of their respective owners.



### TECHNICALLY SPEAKING

Accent offers Bluetooth® with voice recognition, which allows you to make phone calls hands-free or start music streaming without ever reaching for your phone. It can also download your phonebook.<sup>2</sup>



### FINGERTIP CONTROL

Available steering wheel controls put the audio, Bluetooth phone and cruise control systems at your fingertips.



### ROOM TO ROAM

You carry the world on your shoulders. Shouldn't your car at least make room for them? Accent does, with best-in-class front and rear shoulder room.



### MORE IN STORE

With its best-in-class cargo volume, Accent 5-door includes a standard 60/40 split fold-down rear seatback that helps you carry larger, bulkier items. It also has room for the little things, thanks to convenient storage spaces like map pockets and bottle holders built into the front doors, a sunglasses holder, an available sliding armrest storage console, and more.



### SIRIUS FUN

Standard SiriusXM Satellite Radio lets you choose from just about every type of music, sports, news, talk radio, comedy and more. Set your listening options to fun.<sup>3</sup>



### SOAK IT ALL IN

There's nothing like a power sunroof to transform the interior of a car. At the touch of a button, Accent lets the sunshine in...and the good times roll.





4-DOOR GLS in Clearwater Blue

## 2013 ACCENT PERFORMANCE & SAFETY

# A DIRECT INJECTION OF DRIVING CONFIDENCE.

Look under the hood of Accent and you'll find a 4-cylinder powerplant so advanced, it was named a Ward's 10 Best Engine in 2012.<sup>1</sup> Technologies like Gasoline Direct Injection and Dual Continuously Variable Valve Timing help it deliver an impressive 138 horsepower with a 40 MPG highway rating. Accent was also the first in its class to offer you a choice of automatic or manual 6-speed transmissions as standard. Either way, the smooth, responsive transfer of power helps transform your daily commute into the highlight of your day. In fact, after driving it, *Edmunds.com* declared, "Accent is one of the most confident-handling and best-riding subcompacts ever built."<sup>2</sup> And rest assured, Accent comes with an impressive array of standard safety features, too.



### GASOLINE DIRECT INJECTION

GDI is state-of-the-art engine technology that injects fuel directly into the combustion chamber for a more complete and powerful combustion. It's a technology you won't find on Honda Fit or Toyota Yaris – one whose efficiency helps Accent simultaneously achieve 138-HP performance with best-in-class standard fuel economy.



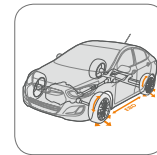
### ACTIVE ECO SYSTEM

All Accent models with automatic transmissions have an Active ECO System that modifies engine and transmission control for up to a 7% improvement in real-world fuel economy.<sup>3</sup>



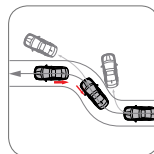
### SPLIT-SECOND SAFETY

Six airbags come standard on Accent. In the event of a collision, seatbelt pretensioners cinch tight to hold front-seat occupants in position, while active front head restraints adjust their position in the blink of an eye to help minimize whiplash.<sup>4</sup>



### SURE-FOOTED TRACTION

When accelerating or driving on slippery surfaces, Accent's standard Traction Control System reduces engine power and/or applies braking to the wheel that is slipping, effectively rerouting power to the wheel with greater traction for added stability.<sup>6</sup>



### GRACE UNDER PRESSURE

A few years ago, luxury carmakers were boasting about advanced safety technologies like Electronic Stability Control (ESC) on their flagship models. Now, Hyundai is offering Vehicle Stability Management standard on the 2013 Accent. VSM integrates control of ESC and motor-driven power steering for precise handling assistance that helps keep you firmly in control.<sup>5</sup>



### ADVANCED BRAKING TECHNOLOGIES

Stopping power is enhanced with ABS and Electronic Brake-force Distribution, which examines the effect of vehicle load on weight distribution and apportions braking between front and rear axles to optimize stopping ability. Brake Assist, another standard technology on Accent, senses a panic stop and immediately applies maximum braking pressure to shorten stopping distances.

<sup>1</sup> *Wards Auto World*, 2012. <sup>2</sup> *Edmunds.com* October 2011 Comparison Test of the 2012 Hyundai Accent GLS vs. 2012 Nissan Versa 1.6 SL. <sup>3</sup> Based on internal Hyundai testing. <sup>4</sup> The Supplemental Restraint System (SRS) is designed to work with the 3-point seatbelt system. The SRS deploys in certain frontal and/or side-impact conditions where significant injury is likely. The SRS is not a substitute for seatbelts, which should be worn at all times. Children under the age of 13 should be restrained securely in the rear seat. NEVER place a rear-facing child seat in the front seat of a vehicle that has a passenger-side airbag. <sup>5</sup> Electronic Stability Control (ESC) cannot control your vehicle's stability under all driving situations. ESC is not a substitute for safe driving practices. No system, no matter how advanced, can overcome physics or correct poor driving. The driver is always responsible for controlling the vehicle and must use caution to avoid loss of control in all driving conditions. Speed, road conditions and driver steering input will affect whether ESC can help prevent loss of control. See Owner's Manual for details. <sup>6</sup> The Traction Control System is meant to enhance conscientious driving habits and is not a substitute for safe driving practices.





## 2013 ACCENT LINEUP

### 4-DOOR / GLS



#### KEY STANDARD FEATURES:

- 138 HP 1.6L Gasoline Direct Injection DOHC 4-cyl engine with Dual Continuously Variable Valve Timing
- 6-speed manual or available SHIFTRONIC® 6-speed automatic transmission with Active ECO system and Hillstart Assist Control
- Air conditioning
- Power windows & door locks
- Remote keyless entry with panic alert
- AM/FM/SiriusXM®/CD/MP3 audio with 6 speakers
- iPod®/USB auxiliary input jacks
- Tilt steering wheel & 6-way adjustable driver seat
- 60/40 split fold-down rear seatback
- Active front head restraints & adjustable head restraints for all seating positions
- 6-airbag safety system with advanced dual front airbags and Occupant Classification System
- Vehicle Stability Management and Electronic Stability Control with Traction Control System
- Anti-lock Braking System with Electronic Brake-force Distribution & Brake Assist
- Heated bodycolor power side mirrors
- 14" steel wheels with full wheel covers

#### PREMIUM PACKAGE:

- + Steering wheel audio & cruise controls
- + Bluetooth® hands-free phone system with voice recognition
- + Premium cloth seats
- + Piano Black interior accents
- + Inside door handles in chrome
- + Sliding armrest storage box
- + Front fog lights
- + 16" alloy wheels & rear disc brakes

### 5-DOOR / GS



#### KEY STANDARD FEATURES:

- 138 HP 1.6L Gasoline Direct Injection DOHC 4-cyl engine with Dual Continuously Variable Valve Timing
- 6-speed manual or available SHIFTRONIC® 6-speed automatic transmission with Active ECO system and Hillstart Assist Control
- Air conditioning
- Power windows & door locks
- Remote keyless entry with panic alert
- AM/FM/SiriusXM®/CD/MP3 audio with 6 speakers
- iPod®/USB auxiliary input jacks
- Tilt steering wheel & 6-way adjustable driver seat
- Cruise control (A/T only)
- 60/40 split fold-down rear seatback
- Active front head restraints & adjustable head restraints for all seating positions
- 6-airbag safety system with advanced dual front airbags and Occupant Classification System
- Vehicle Stability Management and Electronic Stability Control with Traction Control System
- Anti-lock Braking System with Electronic Brake-force Distribution & Brake Assist
- Heated bodycolor power side mirrors
- Rear roof-mounted antenna
- Rear wiper
- 14" steel wheels with full wheel covers

#### EPA MILEAGE (City / Highway / Combined)

- 6-speed manual : 30 / 40 / 34
- 6-speed automatic : 30 / 40 / 33



### 5-DOOR / SE



#### GS EQUIPMENT PLUS:

- + Sport-tuned steering
- + Rear disc brakes
- + Leather-wrapped steering wheel and shift knob
- + Steering-wheel audio & cruise controls
- + Bluetooth® hands-free phone system with voice recognition
- + Premium cloth seats
- + Piano Black interior accents
- + Sliding armrest storage box
- + Side mirrors with integrated turn signals
- + Front fog lights
- + Rear spoiler
- + 16" alloy wheels
- + Optional power tilt-and-slide one-touch glass sunroof

#### SPECIFICATIONS

- Length : 172.0 (4DR) / 162.0 (5DR) inches
- Wheelbase : 101.2 inches
- Height : 57.1 inches
- Width (excludes mirrors) : 66.9 inches
- Fuel Tank : 11.4 gallons
- Interior volume : 103.4 (4DR) / 111.3 (5DR) cu ft
- Passenger : 89.7 (4DR) / 90.1 (5DR) cu ft
- Cargo (rear seats up) : 13.7 (4DR) / 21.2 (5DR) cu ft
- Cargo (rear seats down) : 47.5 (5DR) cu ft

## 2013 ACCENT EXTERIOR COLORS



## 2013 ACCENT INTERIOR COLORS



## AMERICA'S BEST WARRANTY

POWERTRAIN LIMITED  
WARRANTY  
**10 YEARS**  
100,000 MILES

NEW VEHICLE LIMITED  
WARRANTY  
**5 YEARS**  
60,000 MILES

ANTI-PERFORATION  
WARRANTY  
**7 YEARS**  
UNLIMITED MILES

24-HOUR ROADSIDE  
ASSISTANCE  
**5 YEARS**  
UNLIMITED MILES



# Assurance

VISIT HYUNDAIASSURANCE.COM FOR DETAILS.

#### EXPLORE HYUNDAI.COM

Be sure to visit our website, where you can build your own Accent, locate a Hyundai dealer near you, and best of all, schedule a test drive.

#### HYUNDAIUSA.COM/SOCIAL



See dealer for LIMITED WARRANTY details. Fuel economy estimated by EPA for comparison only. While the information contained in this brochure was correct at the time of printing, specifications and equipment can change. Feature comparisons based on competitor information available at the time of printing. No warranty or guarantee is being extended in this brochure, and Hyundai reserves the right to change product specifications and equipment at any time without incurring obligations. Some vehicles are shown with optional equipment. Specifications apply to U.S. vehicles only. Please contact your Hyundai dealer for current vehicle specifications. As part of Hyundai's commitment to a responsible environment, this brochure is printed using paper certified by the Forest Stewardship Council™. FSC® certification helps ensure that the highest social and environmental standards are met in the making of the paper we use, contributing to conservation, responsible management, and community level benefits for people near the forests.

