

2012 HYUNDAI **ACCENT**



اراد خودرو فارما

تلفون: ۰۲۱-۸۸۸۶۲۰۸۵  
Farm.com

## 2012 ACCENT **NEW THINKING**

---

From the very beginning, our engineers were determined to conceive something more than a redesigned car. They wanted to change the very idea of what a subcompact could be.

Can we engineer a car that rolls onto the scene with best-in-class horsepower, while also delivering class-leading standard fuel economy? Can we conceive a fluid, aerodynamic profile with an interior cabin spacious enough to offer the most front and rear shoulder room in its class? Can we wave goodbye to the compromises inherent in traditional subcompacts?

The all-new 2012 Hyundai Accent has all the answers.

With three trim levels to choose from, there's plenty to consider. The artful simplicity of the GLS 4-Door. The versatility of a well-equipped GS 5-Door. And the sport-inspired pleasures of the SE 5-Door. Each new model is molded with dynamic styling that is sure to raise eyebrows as well as expectations.

What happens when you give an imaginative team of engineers the freedom to go beyond making changes to a car...and do something so different, it changes people's thinking?

Inquire within.

CLASS-LEADING

**138**<sup>HP</sup> **40**<sub>MPG</sub>



FarmaSoyS.com

**THINK YOU KNOW WHAT TO EXPECT IN  
A SUBCOMPACT CAR? THINK AGAIN.**



4-DOOR GLS in Boston Red / 5-DOOR SE in Marathon Blue



فارس 308  
Faris308.com

5-DOOR SE in Premium Black Cloth

## SO SPACIOUS, YOUR PRECONCEIVED NOTIONS MAY GET LOST.

Use the remote keyless entry<sup>1</sup> to open the Accent's power door locks. Slip behind the wheel and try best-in-class front (and rear) shoulder room on for size. Make yourself comfortable with a six-way adjustable driver's seat and see how easily your fingertips work the SE 5-Door's feature-rich control panel. Notice all the convenient storage spaces placed throughout the cabin: Bottle holders in the front doors. Dual front cupholders. Front door map pockets, and more. When you consider all of this, plus a cavernous cargo area in back, it's clear the all-new Accent was designed from bigger ideas than its subcompact exterior dimensions might suggest – leading the EPA to upgrade it to a compact sedan rating.<sup>2</sup>



### VERSATILE AUDIO SYSTEM<sup>1</sup>

Accent's 172-Watt AM/FM/XM<sup>®</sup>/CD/MP3 audio system features six speakers and iPod<sup>®</sup>/USB/auxiliary input jacks<sup>3</sup> that charge your portable devices while letting you navigate personal playlists using steering-wheel-mounted controls.<sup>4</sup>



### BLUETOOTH<sup>®</sup> WITH VOICE RECOGNITION<sup>4</sup>

Available Bluetooth<sup>®</sup> controls let you make hands-free phone calls using voice commands and stream music wirelessly via Accent's sound system.<sup>5</sup>



### SLIDING ARMREST STORAGE BOX

An available sliding armrest storage console – another first in its class – provides Accent occupants with the perfect stash for CDs, portable electronics and other personal items.



### FOLDING REAR SEATS

Rear seats that fold down and split in a 60:40 ratio offer through-access to the trunk for accommodating snow and surfboards, skis, golf clubs, camping gear... in short, a healthy variety of large items that bring more fun along for the ride.



### CLASS-LEADING CARGO SPACE

The Accent 5-Door's 21.2 cubic feet of cargo space gives you plenty of options for turning weekend getaways into extended road trips.



### MORE MODERN CONVENIENCES

The all-new Accent GS and SE prove practical and functional can go hand-in-hand in the subcompact category with features like air conditioning. Power windows, mirrors and locks. A trip computer. Cabin air filter. Windshield shade band. XM<sup>®</sup> Satellite Radio...and more.<sup>6</sup>

<sup>1</sup> Remote keyless entry, 172-Watt audio system, 6 speakers and iPod<sup>®</sup>/USB aux jacks are standard on SE and GS, optional on GLS. <sup>2</sup> www.epa.gov. <sup>3</sup> iPod<sup>®</sup> is a registered trademark of Apple Inc. <sup>4</sup> Standard on SE, optional on GS and GLS. <sup>5</sup> The Bluetooth<sup>®</sup> wordmark and logos are registered trademarks owned by Bluetooth SIG, Inc., and any use of such marks by Hyundai is under license. Other trademarks are those of their respective owners. <sup>6</sup> XM<sup>®</sup> Satellite Radio requires an XM subscription, sold separately after the complimentary 3-month introductory period. All fees and programming are subject to change. Traffic and weather channels only available in select metropolitan markets. See your dealer for details. XM service is only available in the 48 contiguous United States. The XM name is a registered trademark of XM Satellite Radio Inc. All other trademarks are property of their respective owners.



بازار خودرو فارس

تلفن شماره روزی: ۰۸۵-۸۸۸۶۲-۲۱

FarmaSoc.com

4-DOOR GLS in Ironman Silver

## FUELED BY NEW THINKING. UNLEASHED WITH NEW POSSIBILITIES.

Powered by an all-aluminum Gamma four-cylinder engine, the all-new Hyundai Accent is invigorating the subcompact segment with the same game-changing driving dynamics that the Hyundai Sonata and Elantra used to shake up their respective categories. Advanced engine technologies deliver class-leading 138 horsepower and 123 lb-ft of torque from just 1.6 liters of displacement, while also managing a best-in-class standard 40 mpg fuel economy rating on the highway. Among the engine's most notable features is Gasoline Direct Injection, a first for the subcompact segment. Other advances, like electronic throttle control paired with a proprietary six-speed manual or automatic transmission (Accent is the only car in its segment to offer both), result in a level of performance that sends expectations revving to redline.



### ECO SHIFTING

Automatic models feature an Active ECO system that regulates engine and transmission control to smooth out throttle response for a 7% improvement in fuel consumption.<sup>1</sup> Manual models feature an EcoShift indicator that helps you make every drop of fuel count.



### DUAL CONTINUOUSLY VARIABLE VALVE TIMING (D-CVVT)

D-CVVT optimizes intake and exhaust valve timing with stable combustion for maximum performance at every speed. The continual optimization of camshaft phasing improves engine performance and fuel economy while helping Accent earn ULEV certification.



### BEST-IN-CLASS STANDARD FUEL ECONOMY

Best-in-class power-to-weight ratio is one more reason Accent achieves a category-leading 30 mpg city/40 mpg highway rating, making it one of four Hyundai nameplates to eclipse the 40 mpg mark.<sup>2</sup>



### GASOLINE DIRECT INJECTION (GDI)

Individual fuel injectors for each cylinder deliver the optimal fuel charge directly into the combustion chamber at precisely the right moment for improved performance. Better fuel efficiency. Reduced emissions. And a driving experience that is every bit as fun as it is efficient.

<sup>1</sup> Estimate based on Hyundai internal tests. <sup>2</sup> EPA estimates for comparison only. Your actual mileage will vary with options, driving conditions, driving habits and the vehicle's condition.

امداد خودرو فارما  
تلفن شبانه روزی: ۰۲۱-۸۸۸۶۲۰۸۵

FarmaSOS.com



فارما سوس و فارما

تلفن شماره روزی: ۰۲۱-۸۸۰۰۸۵

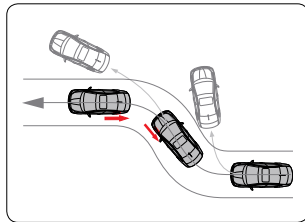
FarmaSOS.com

5-DOOR SE in Boston Red



## ANY SAFER, AND YOU'D BE PACKED IN BUBBLE WRAP.

Safety technologies are a Hyundai hallmark. Which is why Accent features a six-airbag cocoon: Two in front, two front side-impact, and two side curtain devices.<sup>1</sup> In the event of a collision, seatbelt pretensioners cinch tight to hold front-seat occupants in position, while active front head restraints adjust their position in the blink of an eye to help minimize whiplash. When road conditions are slippery or sudden cornering is required, Accent's Vehicle Stability Management integrates control of the car's standard Electronic Stability Control and motor-driven power steering to deliver the kind of precise handling assistance that helps keep you firmly in control.



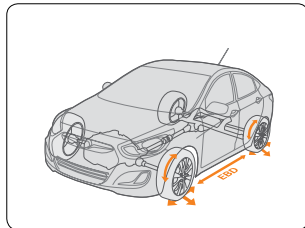
### TRACTION CONTROL SYSTEM (TCS)

For greater control when accelerating or driving on slippery surfaces, Accent's standard TCS reduces engine power and/or applies braking to the wheel that is slipping, effectively rerouting power to the wheel with greater traction.<sup>2</sup>



### ELECTRONIC STABILITY CONTROL (ESC)

ESC continuously monitors factors such as wheel speed, steering angle and lateral g-forces. When it senses a skid is imminent, brake and throttle inputs are adjusted to help keep your Accent on its intended path.<sup>3</sup>



### ADVANCED BRAKING

Accent is the only car in its class with standard 4-wheel disc brakes as standard equipment. Sure-footed stopping power is enhanced with ABS and Electronic Brake-force Distribution, which examines the effect of vehicle load on weight distribution and apportions braking between front and rear axles to optimize stopping ability. Brake Assist, another standard technology on Accent, senses a panic stop and immediately applies maximum braking pressure to shorten stopping distances.



### INCREASED BODY STIFFNESS

Beneath the sheet metal, high-strength steel is used throughout to create an invisible safety shield. Overall, Accent's body stiffness has increased by 22% over last year's model, which gives Hyundai engineers more flexibility with suspension tuning to strike a better balance between handling precision and ride comfort.

<sup>1</sup>The Supplemental Restraint System (SRS) is designed to work with the 3-point seatbelt system. The SRS deploys in certain frontal and/or side-impact conditions where significant injury is likely. The SRS is not a substitute for seatbelts, which should be worn at all times. Children under the age of 13 should be restrained securely in the rear seat. NEVER place a rear-facing child seat in the front seat of a vehicle that has a passenger-side airbag. <sup>2</sup>The Traction Control System (TCS) is meant to enhance conscientious driving habits and is not a substitute for safe driving practices. <sup>3</sup>Electronic Stability Control (ESC) cannot control your vehicle's stability under all driving situations. ESC is not a substitute for safe driving practices. No system, no matter how advanced, can overcome physics or correct poor driving. The driver is always responsible for controlling the vehicle and must use caution to avoid loss of control in all driving conditions. Speed, road conditions and driver steering input will affect whether ESC can help prevent loss of control. See your Owner's Manual for details.

2012 ACCENT LINE-UP

GS



SE



GLS



**POWER / PERFORMANCE**

	GS Standard	SE Standard	GLS Standard
1.6L Gasoline Direct Injection DOHC 4-cylinder engine with Dual Continuously Variable Valve Timing	S	S	S
6-speed manual transmission	S	S	S
6-speed automatic transmission w/ OD lock-up torque converter, SHIFTRONIC® manual shift mode and Hillstart Assist Control	0	0	0
Active Eco System for fuel efficiency management (A/T only)	0	0	0
Independent front suspension with MacPherson struts and coil springs	S	S	S
Rear torsion axle suspension with monotube shock absorbers	S	S	S
14" covered steel wheels with low rolling resistance P175/70R all-season tires	S	-	S
16" alloy wheels with low rolling resistance P195/50R all-season tires	-	S	0

**COMFORT / CONVENIENCE**

Premium cloth seating surfaces	-	S	0
Manual 6-way adjustable driver's seat	S	S	S
Remote keyless entry system with panic alert	S	S	0
Tilt steering wheel	S	S	S
Leather-wrapped steering wheel and shift knob	-	S	-
Air conditioning	S	S	0
Power windows (front and rear)	S	S	0
Power door locks	S	S	S
Cruise control	0	S	0
Multi-function trip computer (distance to empty, average fuel consumption, vehicle speed, elapsed time, instant fuel consumption)	S	S	S
Front dual cupholders, 12-volt outlet, assist grips	S	S	S
Driver's seat armrest	S	-	S
Sliding armrest storage box	-	S	0
Sunglass holder	S	S	0
Adjustable front head restraints and rear-seat head restraints	S	S	S
60/40 split fold-down rear seatback	S	S	S
Seatback pocket (passenger side)	S	S	S
Dual vanity mirrors	S	S	S
Rear defroster with timer	S	S	S
Cargo cover	S	S	-

**ENTERTAINMENT SYSTEMS**

	GS Standard	SE Standard	GLS Standard
172-Watt AM/FM/XM®/CD/MP3 audio system with 6 speakers	S	S	0
iPod®/USB and MP3 auxiliary input jacks	S	S	0
Bluetooth® hands-free phone system with voice recognition	-	S	0
Steering-wheel-mounted audio controls	-	S	0
Audio prep with 4 speakers and roof-mounted antenna	-	-	S
Roof-mounted AM/FM/XM® antenna	S	S	0

**SAFETY / SECURITY**

6-airbag safety system with advanced dual front airbags and Occupant Classification System	S	S	S
4-wheel disc brakes, Anti-lock Braking System with Electronic Brake-force Distribution	S	S	S
Vehicle Stability Management, Electronic Stability Control and Traction Control System	S	S	S
Tire Pressure Monitoring System	S	S	S
Active front head restraints	S	S	S

**STYLING / FUNCTIONALITY**

Bodycolor door handles	S	S	0
Bodycolor mirrors	S	S	0
Dual power adjustable outside mirrors	S	S	0
Bodycolor bumpers	S	S	S
Chrome accented grille	S	S	S
Black window belt moldings and door frames	S	S	S
Front fog lights	-	S	0
Rear spoiler	-	S	-
Tinted glass with windshield sunshade band	S	S	S
Front 2-speed intermittent wiper	S	S	S
Rear wiper	S	S	-

S = STANDARD 0 = OPTIONAL FEATURE - = NOT AVAILABLE

Fuel economy estimated by EPA for comparison only. While the information contained in this brochure was correct at the time of printing, specifications and equipment can change. Feature comparisons based on competitor information available at the time of printing. No warranty or guarantee is being extended in this brochure, and Hyundai reserves the right to change product specifications and equipment at any time without incurring obligations. Some vehicles are shown with optional equipment. Specifications apply to U.S. vehicles only. Please contact your Hyundai dealer for current vehicle specifications.

## EXTERIOR COLOR



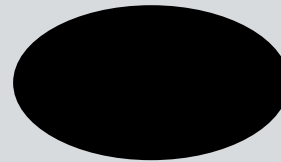
CENTURY WHITE



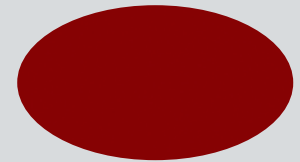
IRONMAN SILVER



CYCLONE GRAY



ULTRA BLACK



BOSTON RED



MOCHA BRONZE



MARATHON BLUE



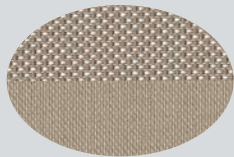
CLEARWATER BLUE



ELECTROLYTE GREEN

امداد خودرو فارما

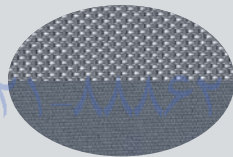
## INTERIOR COLOR



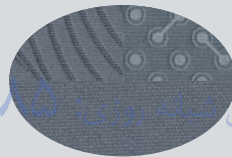
BEIGE CLOTH



PREMIUM BEIGE CLOTH



GRAY CLOTH



PREMIUM GRAY CLOTH



BLACK CLOTH



PREMIUM BLACK CLOTH

FarmaSOS.com

## AMERICA'S BEST WARRANTY

<p><b>10 YEARS</b> <b>100,000 MILES</b></p> <p>POWERTRAIN LIMITED WARRANTY</p>	<p><b>5 YEARS</b> <b>60,000 MILES</b></p> <p>NEW VEHICLE LIMITED WARRANTY</p>
<p><b>7 YEARS</b> <b>UNLIMITED MILES</b></p> <p>ANTI-PERFORATION WARRANTY</p>	<p><b>5 YEARS</b> <b>UNLIMITED MILES</b></p> <p>24-HOUR ROADSIDE ASSISTANCE</p>

<sup>1</sup>See dealer for LIMITED WARRANTY details.

**HYUNDAI**  
**Assurance**

For over a decade, Hyundai has backed every car we've built with America's Best Warranty and this simple promise: Relax. We've got your back for the next 10 years. It's a commitment to customers that's evolved into Hyundai Assurance, an umbrella of services including 24/7 Roadside Assistance and more. Visit [www.hyundaiassurance.com](http://www.hyundaiassurance.com) for details.

As part of Hyundai's commitment to a sustainable environment, this brochure is printed using paper certified by the Forest Stewardship Council. FSC-certification helps ensure that the highest social and environmental standards are met in the making of the paper we use, contributing to conservation, responsible management, and community level benefits for people near the forests.



 **HYUNDAI** | NEW THINKING.  
NEW POSSIBILITIES.

امداد خود را فارما

تلفن شبانه روزی: ۰۸۸۶۲۰۸

FarmaSOS.com

**EXPLORE HYUNDAI.COM** | Be sure to visit our website, where you can build your own Accent, locate a Hyundai dealer near you, and best of all - schedule a test drive.



Become a fan of Hyundai at  
[facebook.com/hyundai](https://www.facebook.com/hyundai)



Follow us on  
[twitter.com/hyundai](https://twitter.com/hyundai)

©2011 HYUNDAI MOTOR AMERICA

NP020-Q2012